

CYR61 Antibody

Catalog No: #36392

Orders: order@signalwayantibody.comSupport: tech@signalwayantibody.com

Description

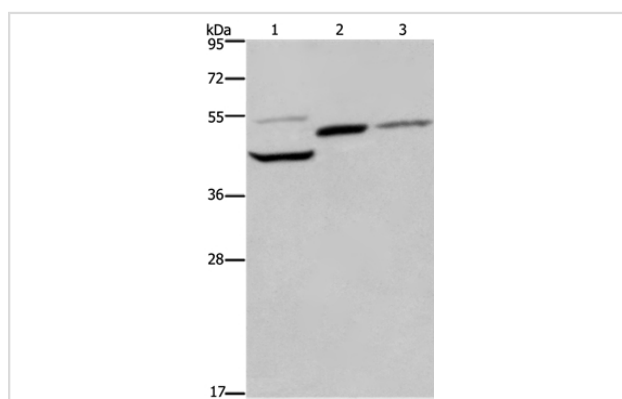
Product Name	CYR61 Antibody
Host Species	Rabbit
Clonality	Polyclonal
Purification	Antigen affinity purification.
Applications	WB IHC
Species Reactivity	Hu Ms Rt
Specificity	The antibody detects endogenous levels of total CYR61 protein.
Immunogen Type	Recombinant Protein
Immunogen Description	Fusion protein corresponding to a region derived from internal residues of human cysteine-rich, angiogenic inducer, 61
Target Name	CYR61
Other Names	CCN1; GIG1; IGFBP10
Accession No.	Swiss-Prot#: O00622NCBI Gene ID: 3491Gene Accssion: BC001271
Uniprot	O00622
GeneID	3491;
SDS-PAGE MW	42kd
Concentration	2.6mg/ml
Formulation	Rabbit IgG in pH7.4 PBS, 0.05% NaN ₃ , 40% Glycerol.
Storage	Store at -20°C

Application Details

Western blotting: 1:200-1:1000

Immunohistochemistry: 1:50-1:200

Images



Gel: 8%SDS-PAGE

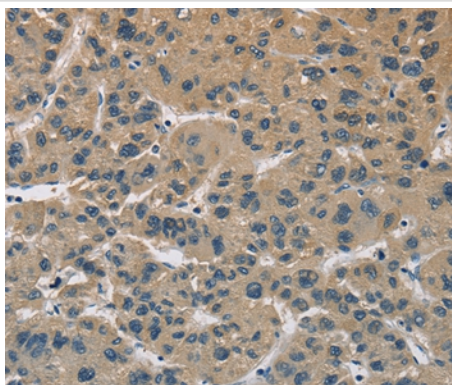
Lysates (from left to right): Mouse heart, kidney and liver tissue

Amount of lysate: 40ug per lane

Primary antibody: 1/350 dilution

Secondary antibody dilution: 1/8000

Exposure time: 2 minutes



Immunohistochemical analysis of paraffin-embedded Human liver cancer tissue using #36392 at dilution 1/60.

Background

The secreted protein encoded by this gene is growth factor-inducible and promotes the adhesion of endothelial cells. The encoded protein interacts with several integrins and with heparan sulfate proteoglycan. This protein also plays a role in cell proliferation, differentiation, angiogenesis, apoptosis, and extracellular matrix formation.

Note: This product is for in vitro research use only