

CST6 Antibody

Catalog No: #36393

Orders: order@signalwayantibody.comSupport: tech@signalwayantibody.com

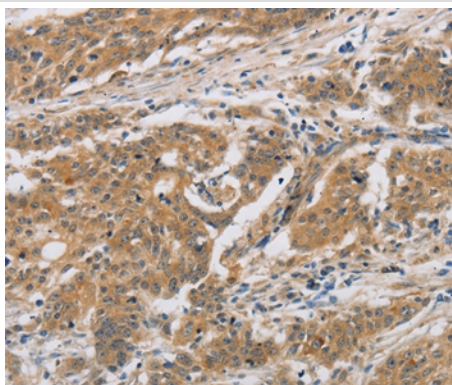
Description

Product Name	CST6 Antibody
Host Species	Rabbit
Clonality	Polyclonal
Purification	Antigen affinity purification.
Applications	IHC
Species Reactivity	Hu
Specificity	The antibody detects endogenous levels of total CST6 protein.
Immunogen Type	Recombinant Protein
Immunogen Description	Fusion protein corresponding to a region derived from internal residues of human cystatin E/M
Target Name	CST6
Other Names	cystatin 6;cystatin M;cystatin M/E
Accession No.	Swiss-Prot#: Q15828NCBI Gene ID: 1474Gene Accssion: BC031334
Uniprot	Q15828
GeneID	1474;
Concentration	1.3mg/ml
Formulation	Rabbit IgG in pH7.4 PBS, 0.05% NaN ₃ , 40% Glycerol.
Storage	Store at -20°C

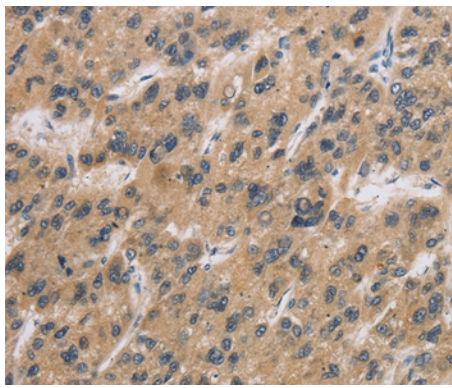
Application Details

Immunohistochemistry: 1:50-1:200

Images



Immunohistochemical analysis of paraffin-embedded Human ovarian cancer tissue using #36393 at dilution 1/30.



Immunohistochemical analysis of paraffin-embedded Human liver cancer tissue using #36393 at dilution 1/30.

Background

The cystatin superfamily encompasses proteins that contain multiple cystatin-like sequences. Some of the members are active cysteine protease inhibitors, while others have lost or perhaps never acquired this inhibitory activity. There are three inhibitory families in the superfamily, including the type 1 cystatins (stefins), type 2 cystatins and the kininogens. The type 2 cystatin proteins are a class of cysteine proteinase inhibitors found in a variety of human fluids and secretions, where they appear to provide protective functions. This gene encodes a cystatin from the type 2 family, which is down-regulated in metastatic breast tumor cells as compared to primary tumor cells. Loss of expression is likely associated with the progression of a primary tumor to a metastatic phenotype.

Note: This product is for in vitro research use only