

CYBA Antibody

Catalog No: #36394

Orders: order@signalwayantibody.comSupport: tech@signalwayantibody.com

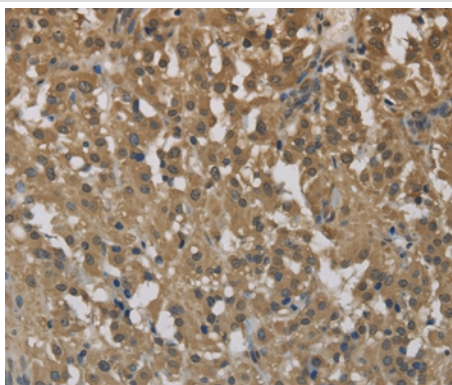
Description

Product Name	CYBA Antibody
Host Species	Rabbit
Clonality	Polyclonal
Purification	Antigen affinity purification.
Applications	IHC
Species Reactivity	Hu
Specificity	The antibody detects endogenous levels of total CYBA protein.
Immunogen Type	Recombinant Protein
Immunogen Description	Fusion protein corresponding to residues near the C terminal of human cytochrome b-245, alpha polypeptide
Target Name	CYBA
Other Names	p22-PHOX
Accession No.	Swiss-Prot#: P13498NCBI Gene ID: 1535Gene Accssion: NP_000092
Uniprot	P13498
GeneID	1535;
Concentration	1.6mg/ml
Formulation	Rabbit IgG in pH7.4 PBS, 0.05% NaN ₃ , 40% Glycerol.
Storage	Store at -20°C

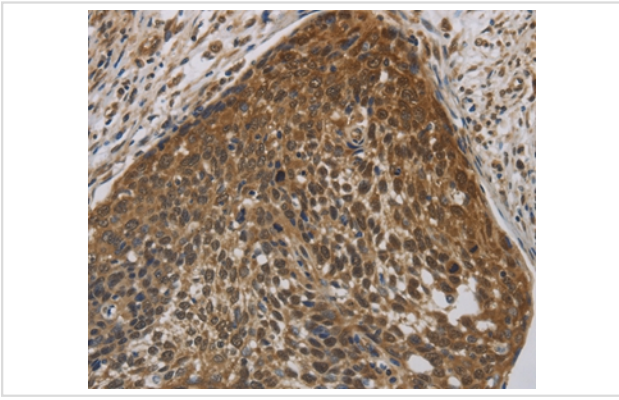
Application Details

Immunohistochemistry: 1:50-1:200

Images



Immunohistochemical analysis of paraffin-embedded Human thyroid cancer tissue using #36394 at dilution 1/40.



Immunohistochemical analysis of paraffin-embedded Human cervical cancer tissue using #36394 at dilution 1/40.

Background

Cytochrome b is comprised of a light chain (alpha) and a heavy chain (beta). This gene encodes the light, alpha subunit which has been proposed as a primary component of the microbicidal oxidase system of phagocytes. Mutations in this gene are associated with autosomal recessive chronic granulomatous disease (CGD), that is characterized by the failure of activated phagocytes to generate superoxide, which is important for the microbicidal activity of these cells.

Note: This product is for in vitro research use only