

## DACH1 Antibody

Catalog No: #36396

Orders: [order@signalwayantibody.com](mailto:order@signalwayantibody.com)Support: [tech@signalwayantibody.com](mailto:tech@signalwayantibody.com)

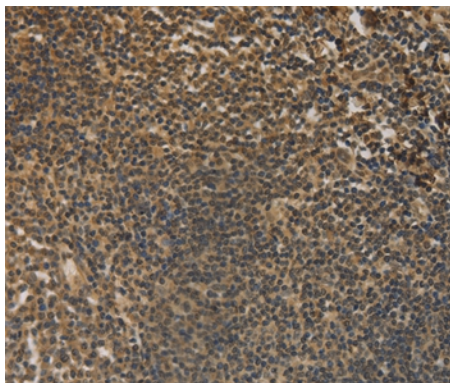
## Description

Product Name	DACH1 Antibody
Host Species	Rabbit
Clonality	Polyclonal
Purification	Antigen affinity purification.
Applications	IHC
Species Reactivity	Hu
Specificity	The antibody detects endogenous levels of total DACH1 protein.
Immunogen Type	Recombinant Protein
Immunogen Description	Fusion protein corresponding to residues near the C terminal of human dachshund homolog 1 (Drosophila)
Target Name	DACH1
Other Names	DACH
Accession No.	Swiss-Prot#: Q9UI36NCBI Gene ID: 1602Gene Accssion: BC021219
Uniprot	Q9UI36
GeneID	1602;
Concentration	2mg/ml
Formulation	Rabbit IgG in pH7.4 PBS, 0.05% NaN <sub>3</sub> , 40% Glycerol.
Storage	Store at -20°C

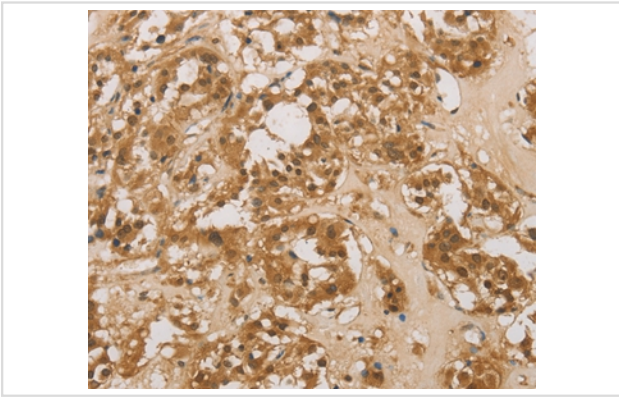
## Application Details

Immunohistochemistry: 1:50-1:200

## Images



Immunohistochemical analysis of paraffin-embedded Human thyroid cancer tissue using #36396 at dilution 1/50.



Immunohistochemical analysis of paraffin-embedded Human tonsil tissue using #36396 at dilution 1/50.

## Background

This gene encodes a chromatin-associated protein that associates with other DNA-binding transcription factors to regulate gene expression and cell fate determination during development. The protein contains a Ski domain that is highly conserved from *Drosophila* to human. Expression of this gene is lost in some forms of metastatic cancer, and is correlated with poor prognosis. Multiple transcript variants encoding different isoforms have been found for this gene.

Note: This product is for in vitro research use only