

DACH2 Antibody

Catalog No: #36397

Orders: order@signalwayantibody.comSupport: tech@signalwayantibody.com

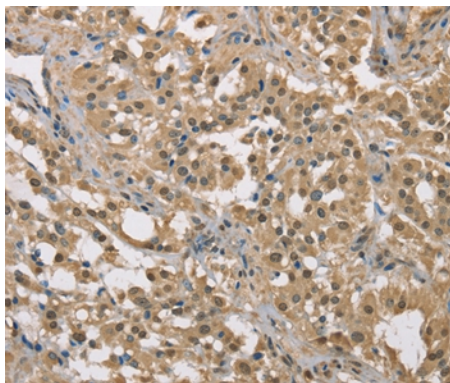
Description

Product Name	DACH2 Antibody
Host Species	Rabbit
Clonality	Polyclonal
Purification	Antigen affinity purification.
Applications	IHC
Species Reactivity	Hu
Specificity	The antibody detects endogenous levels of total DACH2 protein.
Immunogen Type	Recombinant Protein
Immunogen Description	Fusion protein corresponding to residues near the C terminal of human dachshund homolog 2 (Drosophila)
Target Name	DACH2
Other Names	FLJ31391;MGC138545;Dachshund homolog 2
Accession No.	Swiss-Prot#: Q96NX9NCBI Gene ID: 117154Gene Accssion: BC114950
Uniprot	Q96NX9
GeneID	117154;
Concentration	1.9mg/ml
Formulation	Rabbit IgG in pH7.4 PBS, 0.05% NaN ₃ , 40% Glycerol.
Storage	Store at -20°C

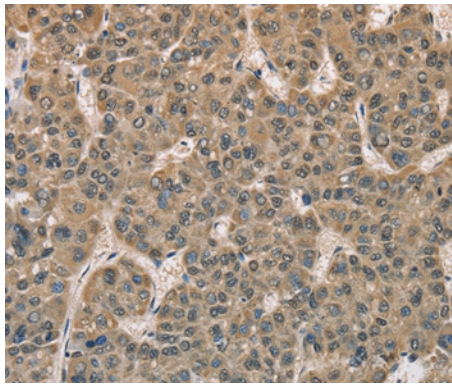
Application Details

Immunohistochemistry: 1:50-1:200

Images



Immunohistochemical analysis of paraffin-embedded Human thyroid cancer tissue using #36397 at dilution 1/40.



Immunohistochemical analysis of paraffin-embedded Human liver cancer tissue using #36397 at dilution 1/40.

Background

This gene is one of two genes which encode a protein similar to the *Drosophila* protein dachshund, a transcription factor involved in cell fate determination in the eye, limb and genital disc of the fly. The encoded protein contains two characteristic dachshund domains: an N-terminal domain responsible for DNA binding and a C-terminal domain responsible for protein-protein interactions. This gene is located on the X chromosome and is subject to inactivation by DNA methylation. The encoded protein may be involved in regulation of organogenesis and myogenesis, and may play a role in premature ovarian failure. Multiple transcript variants encoding different isoforms have been found for this gene.?

Note: This product is for in vitro research use only