

## BRINP1 Antibody

Catalog No: #36400

Orders: [order@signalwayantibody.com](mailto:order@signalwayantibody.com)Support: [tech@signalwayantibody.com](mailto:tech@signalwayantibody.com)

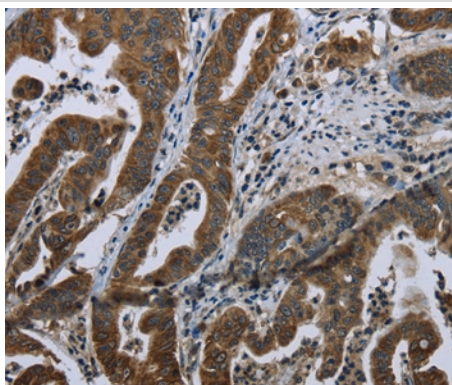
## Description

Product Name	BRINP1 Antibody
Host Species	Rabbit
Clonality	Polyclonal
Purification	Antigen affinity purification.
Applications	IHC
Species Reactivity	Hu
Specificity	The antibody detects endogenous levels of total BRINP1 protein.
Immunogen Type	Recombinant Protein
Immunogen Description	Full length fusion protein
Target Name	BRINP1
Other Names	DBC1; FAM5A; DBCCR1
Accession No.	Swiss-Prot#: O60477NCBI Gene ID: 1620Gene Accssion: BC021560
Uniprot	O60477
GeneID	1620;
Concentration	0.9mg/ml
Formulation	Rabbit IgG in pH7.4 PBS, 0.05% NaN <sub>3</sub> , 40% Glycerol.
Storage	Store at -20°C

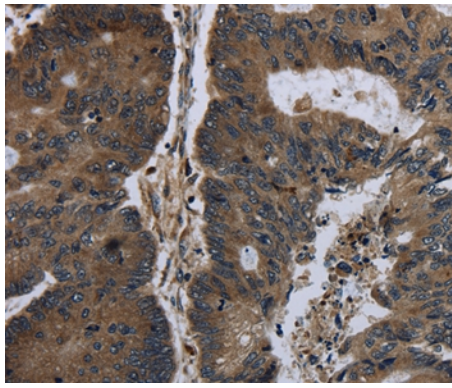
## Application Details

Immunohistochemistry: 1:50-1:200

## Images



Immunohistochemical analysis of paraffin-embedded Human gastric cancer tissue using #36400 at dilution 1/20.



Immunohistochemical analysis of paraffin-embedded Human colon cancer tissue using #36400 at dilution 1/20.

## Background

This gene is located within a chromosomal region that shows loss of heterozygosity in some bladder cancers. It contains a 5' CpG island that may be a frequent target of hypermethylation, and it may undergo hypermethylation-based silencing in some bladder cancers.

Note: This product is for in vitro research use only