

DCBLD2 Antibody

Catalog No: #36401

Orders: order@signalwayantibody.comSupport: tech@signalwayantibody.com

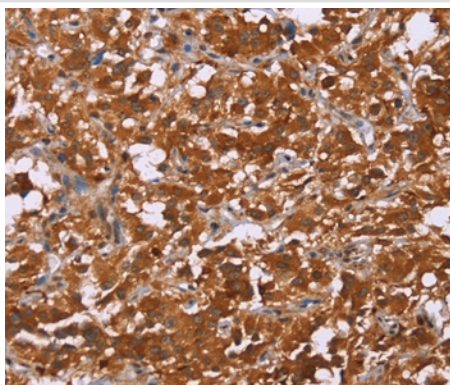
Description

Product Name	DCBLD2 Antibody
Host Species	Rabbit
Clonality	Polyclonal
Purification	Antigen affinity purification.
Applications	IHC
Species Reactivity	Hu
Specificity	The antibody detects endogenous levels of total DCBLD2 protein.
Immunogen Type	Recombinant Protein
Immunogen Description	Fusion protein corresponding to a region derived from internal residues of human discoidin, CUB and LCCL domain containing 2
Target Name	DCBLD2
Other Names	ESDN; CLCP1
Accession No.	Swiss-Prot#: Q96PD2NCBI Gene ID: 131566Gene Accssion: BC029658
Uniprot	Q96PD2
GeneID	131566;
Concentration	2.2mg/ml
Formulation	Rabbit IgG in pH7.4 PBS, 0.05% NaN ₃ , 40% Glycerol.
Storage	Store at -20°C

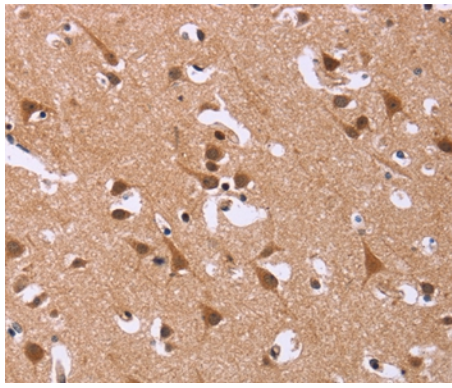
Application Details

Immunohistochemistry: 1:100-1:300

Images



Immunohistochemical analysis of paraffin-embedded Human thyroid cancer tissue using #36401 at dilution 1/50.



Immunohistochemical analysis of paraffin-embedded Human brain tissue using #36401 at dilution 1/50.

Background

CLCP1 (CUB, LCCL and coagulation factor V/VIII-homology domains protein 1), also known as DCBLD2 (discoidin, CUB and LCCL domain containing 2) or ESDN, is a 775 amino acid single-pass type I membrane protein that contains one CUB domain, one LCCL domain and one F5/8 type C domain. Expressed at high levels in heart, testis and skeletal muscle, CLCP1 is thought to regulate vascular smooth muscle cell (VSMC) proliferation and remodeling and may be involved in the transformation and metastasis of various cancers, such as metastatic lung cancer and gastric carcinoma.

Note: This product is for in vitro research use only