

## DEPDC1 Antibody

Catalog No: #36412

Orders: order@signalwayantibody.com

Support: tech@signalwayantibody.com

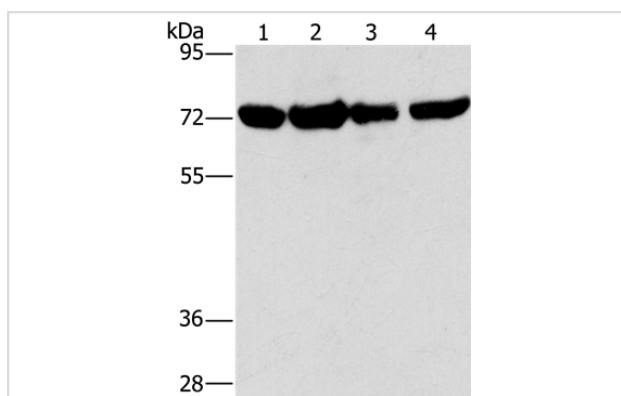
## Description

|                       |   |
|-----------------------|---|
| Product Name          | DEPDC1 Antibody   |
| Host Species          | Rabbit  |
| Clonality             | Polyclonal  |
| Purification          | Antigen affinity purification.  |
| Applications          | WB  |
| Species Reactivity    | Hu  |
| Specificity           | The antibody detects endogenous levels of total DEPDC1 protein.                               |
| Immunogen Type        | Recombinant Protein   |
| Immunogen Description | Fusion protein corresponding to residues near the C terminal of human DEP domain containing 1 |
| Target Name           | DEPDC1  |
| Other Names           | DEP.8; SDP35; DEPDC1A; DEPDC1-V2  |
| Accession No.         | Swiss-Prot#: Q5TB30NCBI Gene ID: 55635Gene Accsion: BC065304/Q5TB30                           |
| Uniprot               | Q5TB30  |
| GeneID                | 55635;  |
| SDS-PAGE MW           | 93kd  |
| Concentration         | 0.6mg/ml  |
| Formulation           | Rabbit IgG in pH7.4 PBS, 0.05% NaN <sub>3</sub> , 40% Glycerol.                               |
| Storage               | Store at -20°C  |

## Application Details

Western blotting: 1:200-1:1000

## Images



Gel: 6%SDS-PAGE

Lysates (from left to right): A172, heLa, hepg2 and 293T cell

Amount of lysate: 40ug per lane

Primary antibody: 1/150 dilution

Secondary antibody dilution: 1/8000

Exposure time: 1 minute

## Background

DEP domain containing 1 is a protein in humans that is encoded by the DEPDC1 gene. May be involved in transcriptional regulation as a transcriptional corepressor. The DEPDC1A-ZNF224 complex may play a critical role in bladder carcinogenesis by repressing the transcription of the

A20 gene, leading to transport of NF-KB protein into the nucleus, resulting in suppression of apoptosis of bladder cancer cells.

---

Note: This product is for in vitro research use only