

DSG2 Antibody

Catalog No: #36413

Orders: order@signalwayantibody.comSupport: tech@signalwayantibody.com

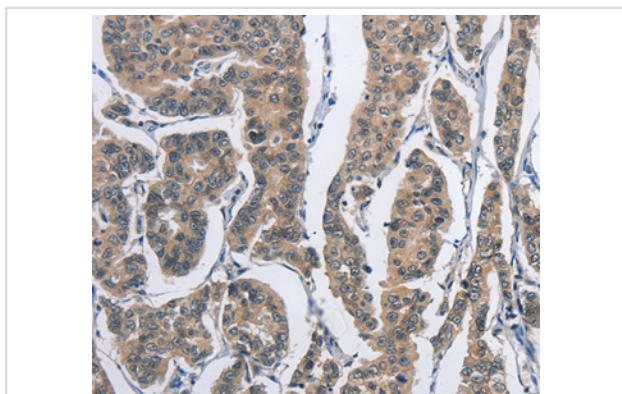
Description

Product Name	DSG2 Antibody
Host Species	Rabbit
Clonality	Polyclonal
Purification	Antigen affinity purification.
Applications	IHC
Species Reactivity	Hu
Specificity	The antibody detects endogenous levels of total DSG2 protein.
Immunogen Type	Recombinant Protein
Immunogen Description	Fusion protein corresponding to residues near the C terminal of human desmoglein 2
Target Name	DSG2
Other Names	HDGC; CDHF5; ARVC10; ARVD10; CMD1BB
Accession No.	Swiss-Prot#: Q14126NCBI Gene ID: 1829Gene Accssion: BC099655
Uniprot	Q14126
GeneID	1829;
Concentration	2mg/ml
Formulation	Rabbit IgG in pH7.4 PBS, 0.05% NaN ₃ , 40% Glycerol.
Storage	Store at -20°C

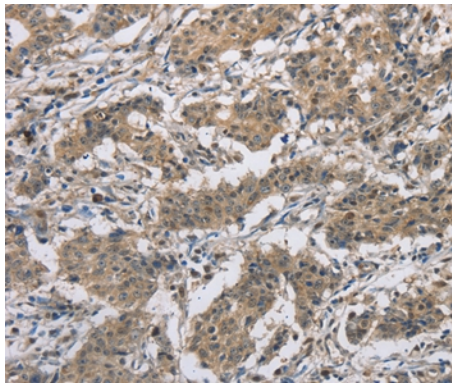
Application Details

Immunohistochemistry: 1:50-1:200

Images



Immunohistochemical analysis of paraffin-embedded Human breast cancer tissue using #36413 at dilution 1/50.



Immunohistochemical analysis of paraffin-embedded Human gastric cancer tissue using #36413 at dilution 1/50.

Background

Desmosomes are cell-cell junctions between epithelial, myocardial, and certain other cell types. This gene product is a calcium-binding transmembrane glycoprotein component of desmosomes in vertebrate epithelial cells. Currently, three desmoglein subfamily members have been identified and all are members of the cadherin cell adhesion molecule superfamily. These desmoglein gene family members are located in a cluster on chromosome 18. This second family member is expressed in colon, colon carcinoma, and other simple and stratified epithelial-derived cell lines.

Note: This product is for in vitro research use only