

CCAR1 Antibody

Catalog No: #36417

Orders: order@signalwayantibody.comSupport: tech@signalwayantibody.com

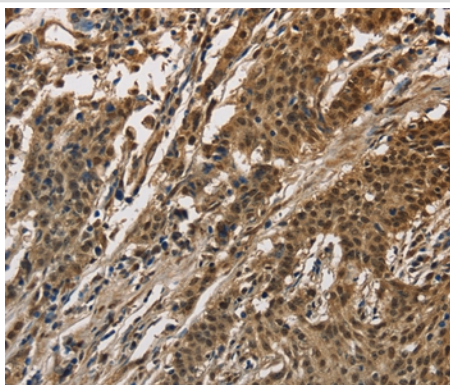
Description

Product Name	CCAR1 Antibody
Host Species	Rabbit
Clonality	Polyclonal
Purification	Antigen affinity purification.
Applications	IHC
Species Reactivity	Hu
Specificity	The antibody detects endogenous levels of total CCAR1 protein.
Immunogen Type	Recombinant Protein
Immunogen Description	Fusion protein corresponding to residues near the C terminal of human cell division cycle and apoptosis regulator 1
Target Name	CCAR1
Other Names	RP11-437A18.1
Accession No.	Swiss-Prot#: Q8IX12NCBI Gene ID: 55749Gene Accssion: BC130626
Uniprot	Q8IX12
GeneID	55749;
Concentration	1.9mg/ml
Formulation	Rabbit IgG in pH7.4 PBS, 0.05% NaN ₃ , 40% Glycerol.
Storage	Store at -20°C

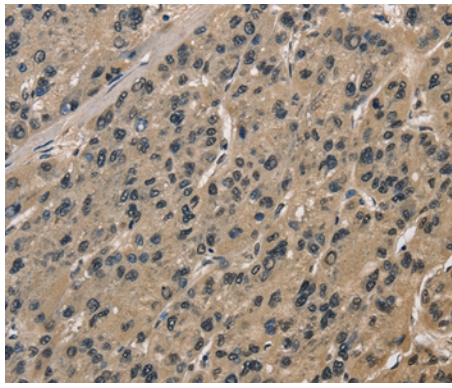
Application Details

Immunohistochemistry: 1:50-1:200

Images



Immunohistochemical analysis of paraffin-embedded Human gastric cancer tissue using #36417 at dilution 1/40.



Immunohistochemical analysis of paraffin-embedded Human liver cancer tissue using #36417 at dilution 1/40.

Background

Cell division cycle and apoptosis regulator protein 1 is a protein that in humans is encoded by the *CCAR1* gene. The deduced 1,150-amino acid CARP1 protein contains a putative cold-shock protein domain expected to bind RNA and a putative DNA-binding motif predicted to be involved in chromosomal organization. Immunohistochemical analysis detected CARP1 in the perinuclear compartment of human breast cancer cells, and the protein had an apparent molecular mass of 130 kD by SDS-PAGE.

Note: This product is for in vitro research use only