

DPF2 Antibody

Catalog No: #36421

Orders: order@signalwayantibody.comSupport: tech@signalwayantibody.com

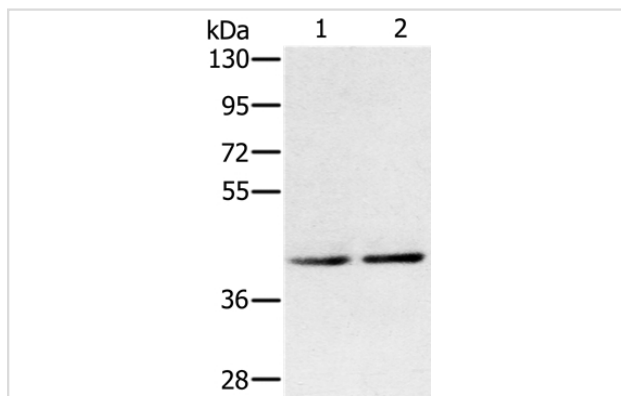
Description

Product Name	DPF2 Antibody
Host Species	Rabbit
Clonality	Polyclonal
Purification	Antigen affinity purification.
Applications	WB
Species Reactivity	Hu
Specificity	The antibody detects endogenous levels of total DPF2 protein.
Immunogen Type	Recombinant Protein
Immunogen Description	Fusion protein corresponding to a region derived from internal residues of human D4, zinc and double PHD fingers family 2
Target Name	DPF2
Other Names	REQ; UBID4; ubi-d4
Accession No.	Swiss-Prot#: Q92785NCBI Gene ID: 5977Gene Accssion: BC014889/Q92785
Uniprot	Q92785
GeneID	5977;
SDS-PAGE MW	44kd
Concentration	1.3mg/ml
Formulation	Rabbit IgG in pH7.4 PBS, 0.05% NaN ₃ , 40% Glycerol.
Storage	Store at -20°C

Application Details

Western blotting: 1:200-1:1000

Images



Gel: 8%SDS-PAGE
 Lysates (from left to right): K562 and Jurkat cell
 Amount of lysate: 40ug per lane
 Primary antibody: 1/400 dilution
 Secondary antibody dilution: 1/8000
 Exposure time: 1 minute

Background

The protein encoded by this gene is a member of the d4 domain family, characterized by a zinc finger-like structural motif. This protein functions as a

transcription factor which is necessary for the apoptotic response following deprivation of survival factors. It likely serves a regulatory role in rapid hematopoietic cell growth and turnover. This gene is considered a candidate gene for multiple endocrine neoplasia type I, an inherited cancer syndrome involving multiple parathyroid, enteropancreatic, and pituitary tumors.

Note: This product is for in vitro research use only