

DTNB Antibody

Catalog No: #36425

Orders: order@signalwayantibody.comSupport: tech@signalwayantibody.com

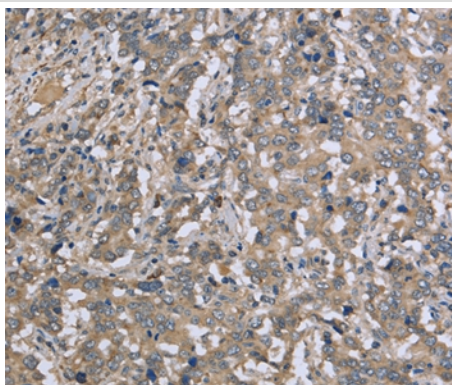
Description

Product Name	DTNB Antibody
Host Species	Rabbit
Clonality	Polyclonal
Purification	Antigen affinity purification.
Applications	IHC
Species Reactivity	Hu
Specificity	The antibody detects endogenous levels of total DTNB protein.
Immunogen Type	Recombinant Protein
Immunogen Description	Fusion protein corresponding to residues near the C terminal of human dystrobrevin, beta
Target Name	DTNB
Other Names	Beta-dystrobrevin; DTN-B;dystrobrevin; beta
Accession No.	Swiss-Prot#: O60941NCBI Gene ID: 1838Gene Accssion: BC016655
Uniprot	O60941
GeneID	1838;
Concentration	2.5mg/ml
Formulation	Rabbit IgG in pH7.4 PBS, 0.05% NaN ₃ , 40% Glycerol.
Storage	Store at -20°C

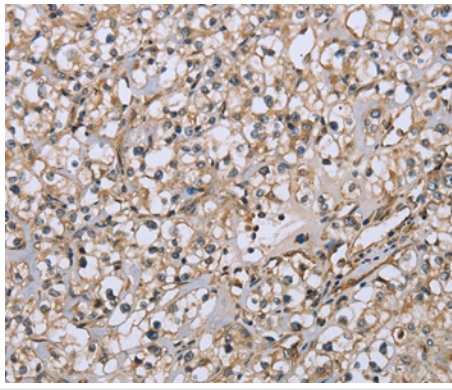
Application Details

Immunohistochemistry: 1:50-1:200

Images



Immunohistochemical analysis of paraffin-embedded Human liver cancer tissue using #36425 at dilution 1/50.



Immunohistochemical analysis of paraffin-embedded Human prostate cancer tissue using #36425 at dilution 1/50.

Background

This gene encodes dystrobrevin beta, a component of the dystrophin-associated protein complex (DPC). The DPC consists of dystrophin and several integral and peripheral membrane proteins, including dystroglycans, sarcoglycans, syntrophins and dystrobrevin alpha and beta. The DPC localizes to the sarcolemma and its disruption is associated with various forms of muscular dystrophy. Dystrobrevin beta is thought to interact with syntrophin and the DP71 short form of dystrophin. Alternatively spliced transcript variants encoding different isoforms have been identified.

Note: This product is for in vitro research use only