

DUSP23 Antibody

Catalog No: #36426

Orders: order@signalwayantibody.comSupport: tech@signalwayantibody.com

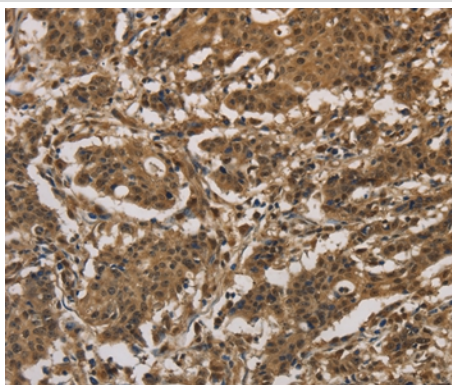
Description

Product Name	DUSP23 Antibody
Host Species	Rabbit
Clonality	Polyclonal
Purification	Antigen affinity purification.
Applications	IHC
Species Reactivity	Hu
Specificity	The antibody detects endogenous levels of total DUSP23 protein.
Immunogen Type	Recombinant Protein
Immunogen Description	Full length fusion protein
Target Name	DUSP23
Other Names	VHZ; MOSP; LDP-3; DUSP25; RP11-190A12.1
Accession No.	Swiss-Prot#: Q9BVJ7NCBI Gene ID: 54935Gene Accssion: BC001140
Uniprot	Q9BVJ7
GeneID	54935;
Concentration	1mg/ml
Formulation	Rabbit IgG in pH7.4 PBS, 0.05% NaN ₃ , 40% Glycerol.
Storage	Store at -20°C

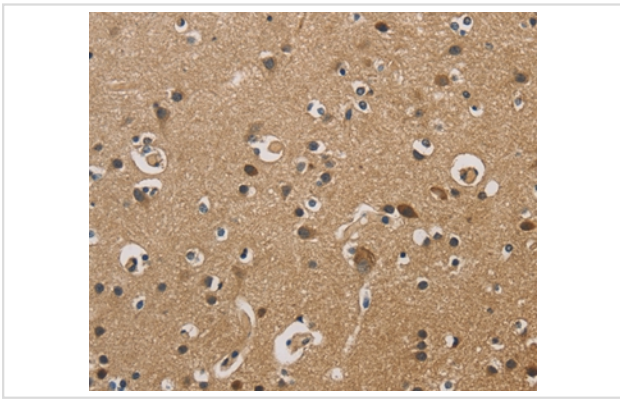
Application Details

Immunohistochemistry: 1:50-1:200

Images



Immunohistochemical analysis of paraffin-embedded Human gastric cancer tissue using #36426 at dilution 1/20.



Immunohistochemical analysis of paraffin-embedded Human brain tissue using #36426 at dilution 1/20.

Background

Dual specificity protein phosphatase 23, also known as low molecular mass dual specificity phosphatase 3 (LDP-3), is an enzyme that in humans is encoded by the DUSP23 gene.

Note: This product is for in vitro research use only