

## DUSP26 Antibody

Catalog No: #36427

Orders: [order@signalwayantibody.com](mailto:order@signalwayantibody.com)Support: [tech@signalwayantibody.com](mailto:tech@signalwayantibody.com)

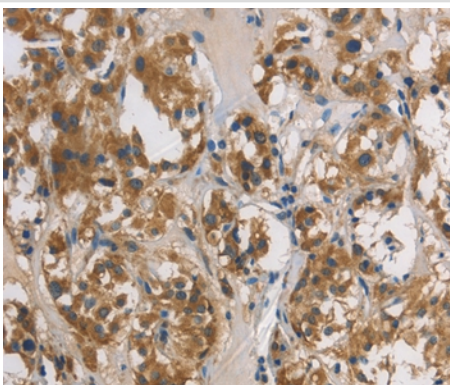
## Description

Product Name	DUSP26 Antibody
Host Species	Rabbit
Clonality	Polyclonal
Purification	Antigen affinity purification.
Applications	IHC
Species Reactivity	Hu
Specificity	The antibody detects endogenous levels of total DUSP26 protein.
Immunogen Type	Recombinant Protein
Immunogen Description	Fusion protein corresponding to residues near the C terminal of human dual specificity phosphatase 26 (putative)
Target Name	DUSP26
Other Names	MKP8; LDP-4; NATA1; SKRP3; DUSP24
Accession No.	Swiss-Prot#: Q9BV47NCBI Gene ID: 78986Gene Accssion: BC001613
Uniprot	Q9BV47
GeneID	78986;
Concentration	2.8mg/ml
Formulation	Rabbit IgG in pH7.4 PBS, 0.05% NaN <sub>3</sub> , 40% Glycerol.
Storage	Store at -20°C

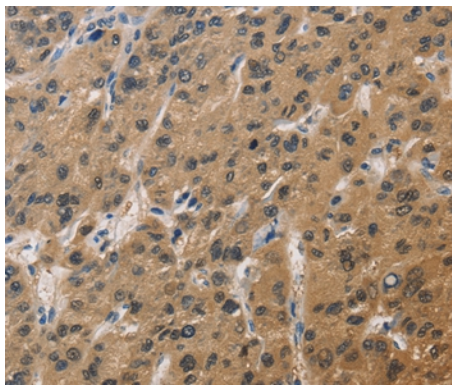
## Application Details

Immunohistochemistry: 1:50-1:200

## Images



Immunohistochemical analysis of paraffin-embedded Human thyroid cancer tissue using #36427 at dilution 1/60.



Immunohistochemical analysis of paraffin-embedded Human liver cancer tissue using #36427 at dilution 1/60.

## Background

DUSP26, also designated LDP4, MKP8, NATA1 and SKRP3, is ubiquitously expressed in brain except in the hippocampus. DUSP26 dephosphorylates p38 thereby inhibiting p38-mediated apoptosis in anaplastic thyroid cancer cells. Downregulation of DUSP26 may also contribute to malignant phenotypes of glioma.

Note: This product is for in vitro research use only