

UBE2S Antibody

Catalog No: #36429

Orders: order@signalwayantibody.comSupport: tech@signalwayantibody.com

Description

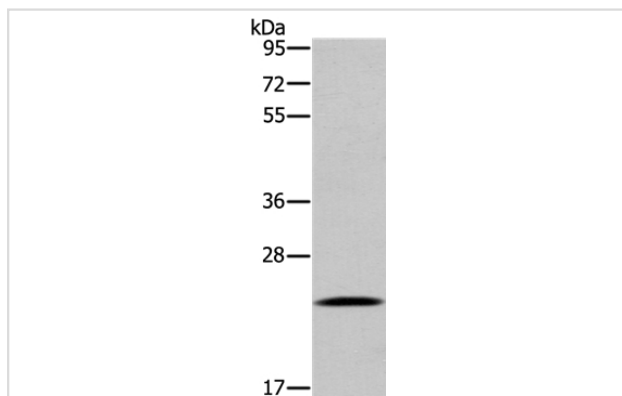
Product Name	UBE2S Antibody
Host Species	Rabbit
Clonality	Polyclonal
Purification	Antigen affinity purification.
Applications	IHC
Species Reactivity	Hu
Specificity	The antibody detects endogenous levels of total UBE2S protein.
Immunogen Type	Recombinant Protein
Immunogen Description	Full length fusion protein
Target Name	UBE2S
Other Names	EPF5; E2EPF; E2-EPF
Accession No.	Swiss-Prot#: Q16763NCBI Gene ID: 27338Gene Accssion: NP_055316
Uniprot	Q16763
GeneID	27338;
SDS-PAGE MW	24kd
Concentration	1.8mg/ml
Formulation	Rabbit IgG in pH7.4 PBS, 0.05% NaN ₃ , 40% Glycerol.
Storage	Store at -20°C

Application Details

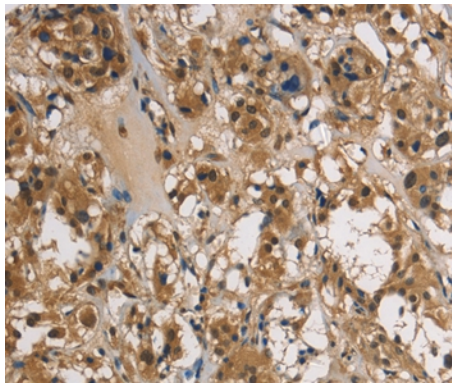
Western blotting: 1:200-1:1000

Immunohistochemistry: 1:50-1:200

Images



Gel: 8%SDS-PAGE
Lysate: 40ug Human testis tissue
Primary antibody: 1/300 dilution
Secondary antibody dilution: 1/8000
Exposure time: 2 minutes



Immunohistochemical analysis of paraffin-embedded Human thyroid cancer tissue using #36429 at dilution 1/40.

Background

This gene encodes a member of the ubiquitin-conjugating enzyme family. The encoded protein is able to form a thiol ester linkage with ubiquitin in a ubiquitin activating enzyme-dependent manner, a characteristic property of ubiquitin carrier proteins.

Note: This product is for in vitro research use only