

MAPRE3 Antibody

Catalog No: #36430

Orders: order@signalwayantibody.comSupport: tech@signalwayantibody.com

Description

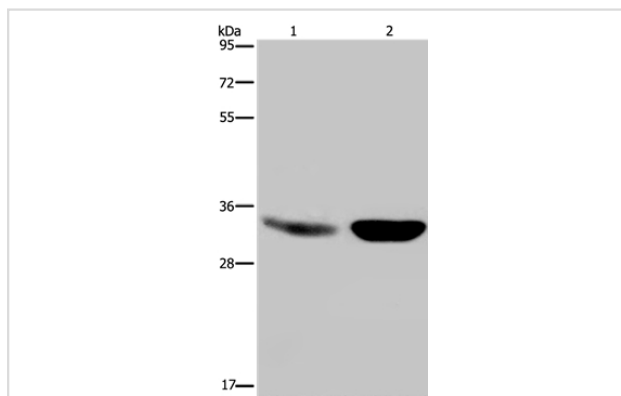
Product Name	MAPRE3 Antibody
Host Species	Rabbit
Clonality	Polyclonal
Purification	Antigen affinity purification.
Applications	WB IHC
Species Reactivity	Hu Ms
Specificity	The antibody detects endogenous levels of total MAPRE3 protein.
Immunogen Type	Recombinant Protein
Immunogen Description	Full length fusion protein
Target Name	MAPRE3
Other Names	EB3; RP3; EBF3; EBF3-S
Accession No.	Swiss-Prot#: Q9UPY8NCBI Gene ID: 22924Gene Accssion: BC011557
Uniprot	Q9UPY8
GeneID	22924;
SDS-PAGE MW	32kd
Concentration	1mg/ml
Formulation	Rabbit IgG in pH7.4 PBS, 0.05% NaN ₃ , 40% Glycerol.
Storage	Store at -20°C

Application Details

Western blotting: 1:500-1:2000

Immunohistochemistry: 1:25-1:100

Images



Gel: 8%SDS-PAGE

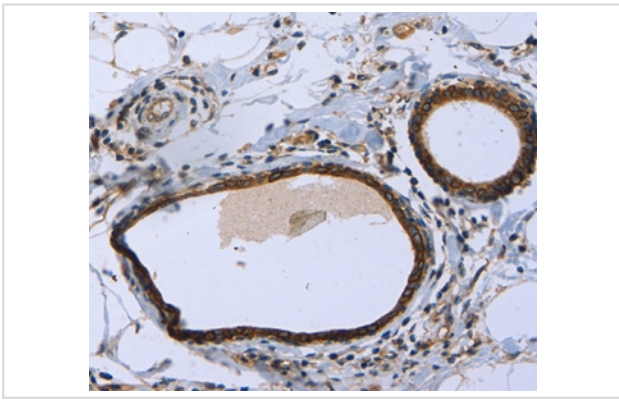
Lysates (from left to right): Human fetal brain and mouse brain tissue

Amount of lysate: 40ug per lane

Primary antibody: 1/500 dilution

Secondary antibody dilution: 1/8000

Exposure time: 5 seconds



Immunohistochemical analysis of paraffin-embedded Human breast cancer tissue using #36430 at dilution 1/20.

Background

The protein encoded by this gene is a member of the RP/EB family of genes. The protein localizes to the cytoplasmic microtubule network and binds APCL, a homolog of the adenomatous polyposis coli tumor suppressor gene.

Note: This product is for in vitro research use only