

KIAA1324 Antibody

Catalog No: #36440

Orders: order@signalwayantibody.comSupport: tech@signalwayantibody.com

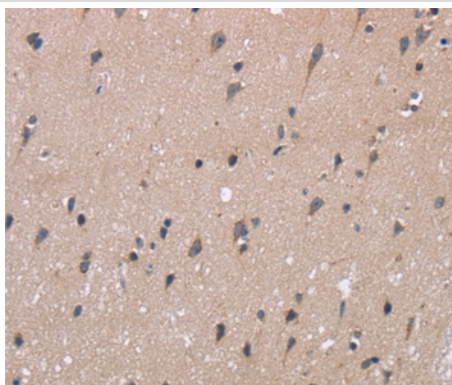
Description

Product Name	KIAA1324 Antibody
Host Species	Rabbit
Clonality	Polyclonal
Purification	Antigen affinity purification.
Applications	IHC
Species Reactivity	Hu
Specificity	The antibody detects endogenous levels of total KIAA1324 protein.
Immunogen Type	Recombinant Protein
Immunogen Description	Fusion protein corresponding to a region derived from internal residues of human KIAA1324
Target Name	KIAA1324
Other Names	EIG121
Accession No.	Swiss-Prot#: Q6UXG2NCBI Gene ID: 57535Gene Accssion: NP_065826
Uniprot	Q6UXG2
GeneID	57535;
Concentration	1.6mg/ml
Formulation	Rabbit IgG in pH7.4 PBS, 0.05% NaN ₃ , 40% Glycerol.
Storage	Store at -20°C

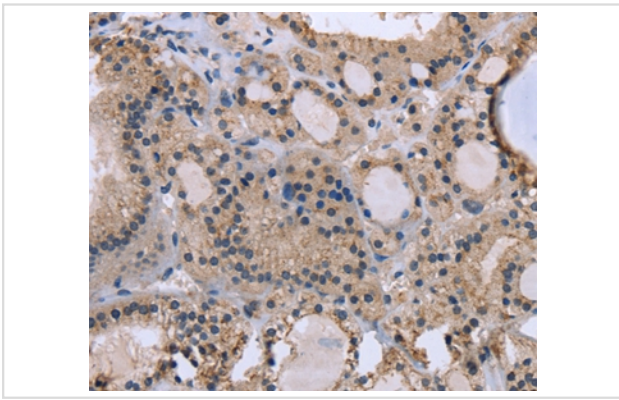
Application Details

Immunohistochemistry: 1:25-1:100

Images



Immunohistochemical analysis of paraffin-embedded Human brain tissue using #36440 at dilution 1/40.



Immunohistochemical analysis of paraffin-embedded Human thyroid cancer tissue using #36440 at dilution 1/40.

Background

Expression of this gene is induced by estrogen and the encoded protein has been characterized as a transmembrane protein. The encoded protein has been found in to correlate with survival in certain carcinomas (PMID: 21102415) and may be important for cellular response to stress (PMID: 21072319). Alternative splicing results in multiple transcript variants.?

Note: This product is for in vitro research use only