

ELAC2 Antibody

Catalog No: #36441

Orders: order@signalwayantibody.comSupport: tech@signalwayantibody.com

Description

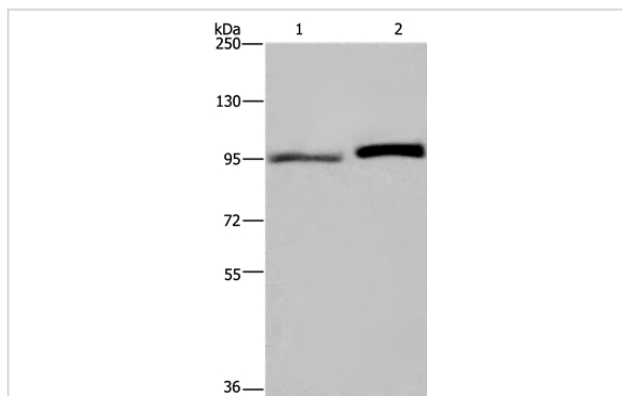
Product Name	ELAC2 Antibody
Host Species	Rabbit
Clonality	Polyclonal
Purification	Antigen affinity purification.
Applications	WB IHC
Species Reactivity	Hu
Specificity	The antibody detects endogenous levels of total ELAC2 protein.
Immunogen Type	Recombinant Protein
Immunogen Description	Fusion protein corresponding to residues near the C terminal of human elaC ribonuclease Z 2
Target Name	ELAC2
Other Names	ELC2; HPC2; COXPD17
Accession No.	Swiss-Prot#: Q9BQ52NCBI Gene ID: 60528Gene Accssion: BC001939
Uniprot	Q9BQ52
GeneID	60528;
SDS-PAGE MW	92kd
Concentration	1.5mg/ml
Formulation	Rabbit IgG in pH7.4 PBS, 0.05% NaN ₃ , 40% Glycerol.
Storage	Store at -20°C

Application Details

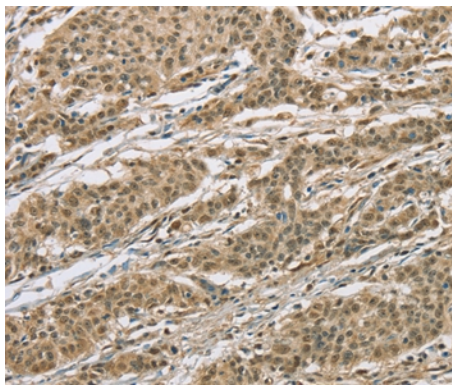
Western blotting: 1:200-1:1000

Immunohistochemistry: 1:50-1:200

Images



Gel: 6%SDS-PAGE
Lysates (from left to right): LoVo and HeLa cell
Amount of lysate: 40ug per lane
Primary antibody: 1/250 dilution
Secondary antibody dilution: 1/8000
Exposure time: 1 minute



Immunohistochemical analysis of paraffin-embedded Human gastric cancer tissue using #36441 at dilution 1/30.

Background

The protein encoded by this gene has a C-terminal domain with tRNA 3' trailer processing endoribonuclease activity, which catalyzes the removal of the 3' trailer from precursor tRNAs. The protein also interacts with activated Smad family member 2 (Smad2) and its nuclear partner forkhead box H1 (also known as FAST-1), and reduced expression can suppress transforming growth factor-beta induced growth arrest. Mutations in this gene result in an increased risk of prostate cancer. Multiple transcript variants encoding different isoforms have been found for this gene.

Note: This product is for in vitro research use only