

## ENTPD5 Antibody

Catalog No: #36443

Orders: order@signalwayantibody.com

Support: tech@signalwayantibody.com

## Description

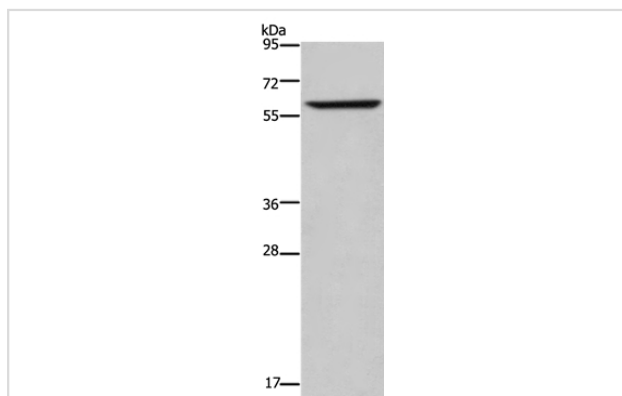
Product Name	ENTPD5 Antibody
Host Species	Rabbit
Clonality	Polyclonal
Purification	Antigen affinity purification.
Applications	WB IHC
Species Reactivity	Hu Ms
Specificity	The antibody detects endogenous levels of total ENTPD5 protein.
Immunogen Type	Recombinant Protein
Immunogen Description	Fusion protein corresponding to a region derived from internal residues of human ectonucleoside triphosphate diphosphohydrolase 5
Target Name	ENTPD5
Other Names	PCPH; CD39L4; NTPDase-5
Accession No.	Swiss-Prot#: O75356NCBI Gene ID: 957Gene Accssion: NP_001240
Uniprot	O75356
GeneID	957;
SDS-PAGE MW	48kd
Concentration	0.9mg/ml
Formulation	Rabbit IgG in pH7.4 PBS, 0.05% NaN <sub>3</sub> , 40% Glycerol.
Storage	Store at -20°C

## Application Details

Western blotting: 1:200-1:1000

Immunohistochemistry: 1:50-1:200

## Images



Gel: 8%SDS-PAGE

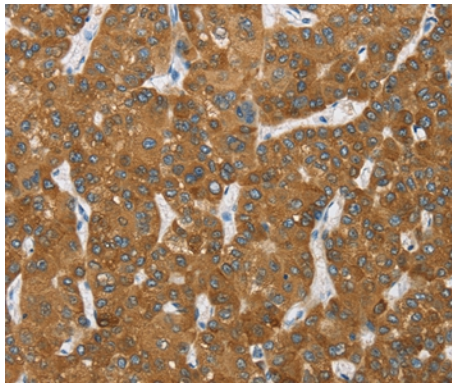
Lysates (from left to right): Mouse liver tissue

Amount of lysate: 40ug per lane

Primary antibody: 1/200 dilution

Secondary antibody dilution: 1/8000

Exposure time: 3 minutes



Immunohistochemical analysis of paraffin-embedded Human liver cancer tissue using #36443 at dilution 1/20.

## Background

The protein encoded by this gene is similar to E-type nucleotidases (NTPases)/ecto-ATPase/apyrases. NTPases, such as CD39, mediate catabolism of extracellular nucleotides. ENTPD5 contains 4 apyrase-conserved regions which is characteristic of NTPases.

Note: This product is for in vitro research use only