

EPSTI1 Antibody

Catalog No: #36445

Orders: order@signalwayantibody.com

Support: tech@signalwayantibody.com

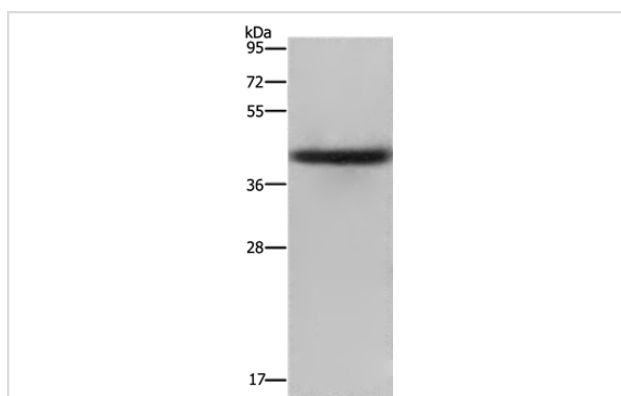
Description

| | |
|-----------------------|--|
| Product Name | EPSTI1 Antibody |
| Host Species | Rabbit |
| Clonality | Polyclonal |
| Purification | Antigen affinity purification. |
| Applications | WB |
| Species Reactivity | Hu |
| Specificity | The antibody detects endogenous levels of total EPSTI1 protein. |
| Immunogen Type | Recombinant Protein |
| Immunogen Description | Fusion protein corresponding to residues near the N terminal of human epithelial stromal interaction 1 |
| Target Name | EPSTI1 |
| Other Names | BRESI1 |
| Accession No. | Swiss-Prot#: Q96J88NCBI Gene ID: 94240Gene Accssion: BC023660 |
| Uniprot | Q96J88 |
| GeneID | 94240; |
| SDS-PAGE MW | 37kd |
| Concentration | 2mg/ml |
| Formulation | Rabbit IgG in pH7.4 PBS, 0.05% NaN ₃ , 40% Glycerol. |
| Storage | Store at -20°C |

Application Details

Western blotting: 1:1000-1:5000

Images



Gel: 8%SDS-PAGE
 Lysates (from left to right): Human placenta tissue
 Amount of lysate: 40ug per lane
 Primary antibody: 1/2000 dilution
 Secondary antibody dilution: 1/8000
 Exposure time: 2 minutes

Background

EPSTI1 (Epithelial-stromal interaction protein 1), also known as BRESI1, is a 318 amino acid protein that is highly expressed in spleen, placenta, small intestine, liver, kidney, thymus, testis and salivary gland. Existing as three isoforms that are formed due to alternative splicing events, EPSTI1 is

weakly expressed in normal breast tissue, but is heavily up-regulated in breast carcinoma, suggesting an important role for EPST11 in tumor formation and/or progression. Additionally, EPST11 is found in blood cells from systemic lupus erythematosus (SLE)-afflicted patients, implicating EPST11 as a potential protein involved in SLE.

Note: This product is for in vitro research use only