

ESR1 Antibody

Catalog No: #36446

Orders: order@signalwayantibody.comSupport: tech@signalwayantibody.com

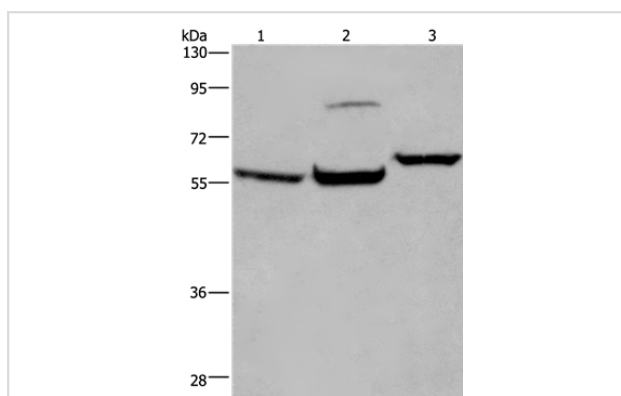
Description

Product Name	ESR1 Antibody
Host Species	Rabbit
Clonality	Polyclonal
Purification	Antigen affinity purification.
Applications	WB
Species Reactivity	Hu Ms
Specificity	The antibody detects endogenous levels of total ESR1 protein.
Immunogen Type	Recombinant Protein
Immunogen Description	Fusion protein corresponding to residues near the C terminal of human estrogen receptor 1
Target Name	ESR1
Other Names	ER; ESR; Era; ESRA; ESTRR; NR3A1
Accession No.	Swiss-Prot#: P03372NCBI Gene ID: 2099Gene Accssion: BC128573
Uniprot	P03372
GeneID	2099;
SDS-PAGE MW	66kd
Concentration	0.9mg/ml
Formulation	Rabbit IgG in pH7.4 PBS, 0.05% NaN ₃ , 40% Glycerol.
Storage	Store at -20°C

Application Details

Western blotting: 1:200-1:1000

Images



Gel: 8%SDS-PAGE

Lysates (from left to right): Mouse brain tissue, 231 and HeLa cell

Amount of lysate: 40ug per lane

Primary antibody: 1/200 dilution

Secondary antibody dilution: 1/8000

Exposure time: 1 minute

Background

This gene encodes an estrogen receptor, a ligand-activated transcription factor composed of several domains important for hormone binding, DNA binding, and activation of transcription. The protein localizes to the nucleus where it may form a homodimer or a heterodimer with estrogen receptor 2.

Estrogen and its receptors are essential for sexual development and reproductive function, but also play a role in other tissues such as bone. Estrogen receptors are also involved in pathological processes including breast cancer, endometrial cancer, and osteoporosis. Alternative splicing results in several transcript variants, which differ in their 5' UTRs and use different promoters.

Note: This product is for in vitro research use only