

ESRRG Antibody

Catalog No: #36449

Orders: order@signalwayantibody.com

Support: tech@signalwayantibody.com

Description

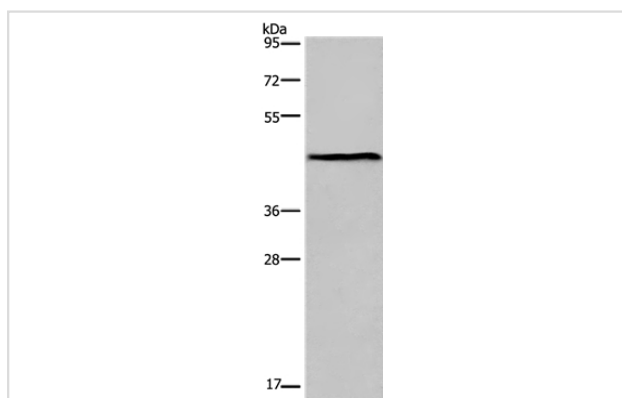
Product Name	ESRRG Antibody
Host Species	Rabbit
Clonality	Polyclonal
Purification	Antigen affinity purification.
Applications	WB IHC
Species Reactivity	Hu Ms
Specificity	The antibody detects endogenous levels of total ESRRG protein.
Immunogen Type	Recombinant Protein
Immunogen Description	Fusion protein corresponding to residues near the C terminal of human estrogen-related receptor gamma
Target Name	ESRRG
Other Names	ERR3; NR3B3; ERRgamma
Accession No.	Swiss-Prot#: P62508NCBI Gene ID: 2104Gene Accssion: BC064700
Uniprot	P62508
GeneID	2104;
SDS-PAGE MW	51kd
Concentration	1.1mg/ml
Formulation	Rabbit IgG in pH7.4 PBS, 0.05% NaN ₃ , 40% Glycerol.
Storage	Store at -20°C

Application Details

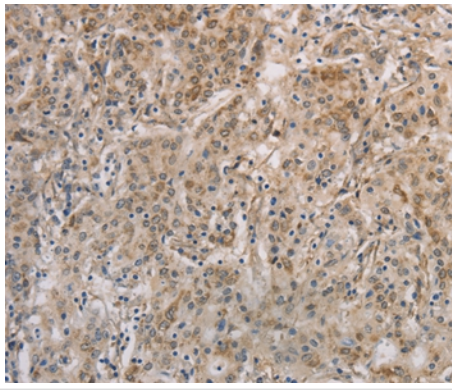
Western blotting: 1:500-1:2000

Immunohistochemistry: 1:50-1:200

Images



Gel: 8%SDS-PAGE
 Lysates (from left to right): Mouse lung tissue
 Amount of lysate: 40ug per lane
 Primary antibody: 1/300 dilution
 Secondary antibody dilution: 1/8000
 Exposure time: 40 seconds



Immunohistochemical analysis of paraffin-embedded Human gastric cancer tissue using #36449 at dilution 1/30.

Background

This gene encodes a member of the estrogen receptor-related receptor (ESRR) family, which belongs to the nuclear hormone receptor superfamily. All members of the ESRR family share an almost identical DNA binding domain, which is composed of two C4-type zinc finger motifs. The ESRR members are orphan nuclear receptors; they bind to the estrogen response element and steroidogenic factor 1 response element, and activate genes controlled by both response elements in the absence of any ligands. The ESRR family is closely related to the estrogen receptor (ER) family. They share target genes, co-regulators and promoters, and by targeting the same set of genes, the ESRRs seem to interfere with the ER-mediated estrogen response in various ways.

Note: This product is for in vitro research use only