

## ETHE1 Antibody

Catalog No: #36450

Orders: [order@signalwayantibody.com](mailto:order@signalwayantibody.com)Support: [tech@signalwayantibody.com](mailto:tech@signalwayantibody.com)

## Description

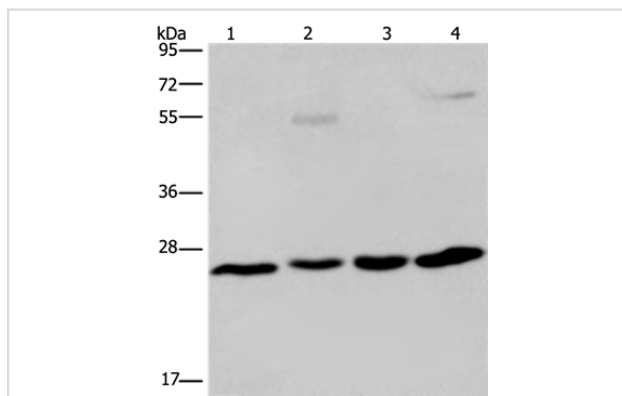
Product Name	ETHE1 Antibody
Host Species	Rabbit
Clonality	Polyclonal
Purification	Antigen affinity purification.
Applications	WB IHC
Species Reactivity	Hu Ms
Specificity	The antibody detects endogenous levels of total ETHE1 protein.
Immunogen Type	Recombinant Protein
Immunogen Description	Fusion protein corresponding to residues near the N terminal of human ethylmalonic encephalopathy 1
Target Name	ETHE1
Other Names	HSCO; YF13H12
Accession No.	Swiss-Prot#: O95571NCBI Gene ID: 23474Gene Accssion: NP_055112
Uniprot	O95571
GeneID	23474;
SDS-PAGE MW	28kd
Concentration	1.6mg/ml
Formulation	Rabbit IgG in pH7.4 PBS, 0.05% NaN <sub>3</sub> , 40% Glycerol.
Storage	Store at -20°C

## Application Details

Western blotting: 1:500-1:2000

Immunohistochemistry: 1:50-1:200

## Images



Gel: 10%SDS-PAGE

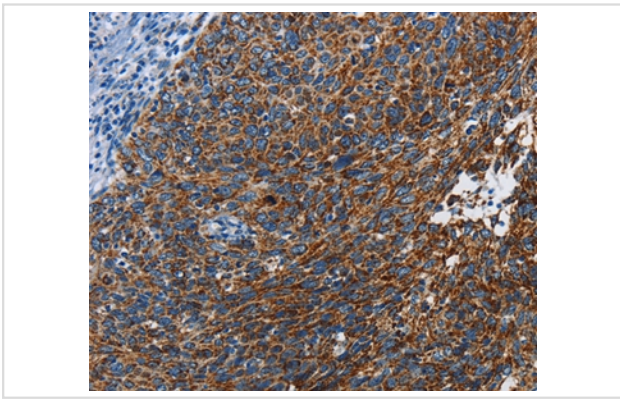
Lysates (from left to right): A549 cell and human hepatocellular carcinoma, mouse liver tissue and HT-29 cell

Amount of lysate: 40ug per lane

Primary antibody: 1/400 dilution

Secondary antibody dilution: 1/8000

Exposure time: 1 minute



Immunohistochemical analysis of paraffin-embedded Human cervical cancer tissue using #36450 at dilution 1/20.

## Background

This gene encodes a sulfur dioxygenase that localizes within the mitochondrial matrix. The enzyme functions in sulfide catabolism. Mutations in this gene result in ethylmalonic encephalopathy.

Note: This product is for in vitro research use only