

ETV7 Antibody

Catalog No: #36452

Orders: order@signalwayantibody.com

Support: tech@signalwayantibody.com

Description

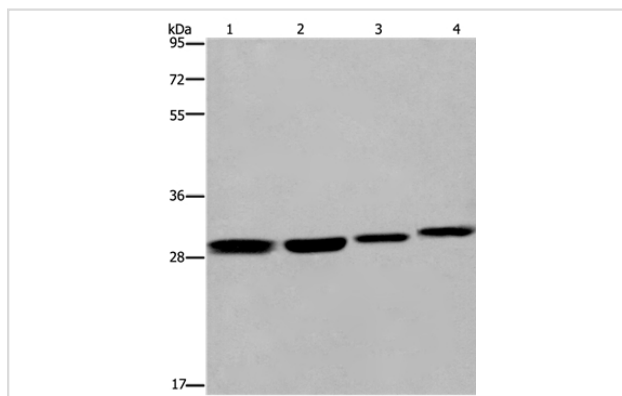
Product Name	ETV7 Antibody
Host Species	Rabbit
Clonality	Polyclonal
Purification	Antigen affinity purification.
Applications	WB IHC
Species Reactivity	Hu Ms
Specificity	The antibody detects endogenous levels of total ETV7 protein.
Immunogen Type	Recombinant Protein
Immunogen Description	Fusion protein corresponding to residues near the N terminal of human ets variant 7
Target Name	ETV7
Other Names	TEL2; TELB; TEL-2
Accession No.	Swiss-Prot#: Q9Y603NCBI Gene ID: 51513Gene Accssion: BC035853
Uniprot	Q9Y603
GeneID	51513;
SDS-PAGE MW	39kd
Concentration	1.2mg/ml
Formulation	Rabbit IgG in pH7.4 PBS, 0.05% NaN ₃ , 40% Glycerol.
Storage	Store at -20°C

Application Details

Western blotting: 1:500-1:2000

Immunohistochemistry: 1:25-1:100

Images



Gel: 8%SDS-PAGE

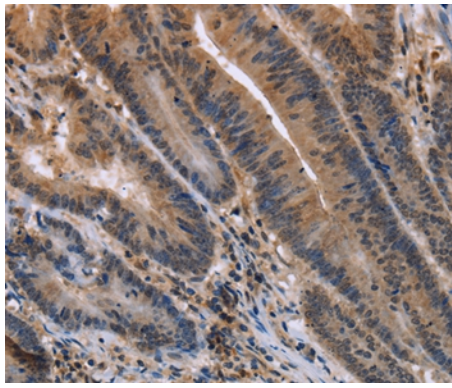
Lysates (from left to right): 293T and LoVo cell, mouse skin tissue and A172 cell

Amount of lysate: 40ug per lane

Primary antibody: 1/600 dilution

Secondary antibody dilution: 1/8000

Exposure time: 30 seconds



Immunohistochemical analysis of paraffin-embedded Human colon cancer tissue using #36452 at dilution 1/30.

Background

The protein encoded by this gene belongs to the ETS family of transcription factors, which is a large group of evolutionarily conserved transcriptional regulators that play an important role in a variety of cellular processes throughout development and differentiation, and are involved in oncogenesis as well. This protein is predominantly expressed in hematopoietic tissues. Several alternatively spliced transcript variants encoding different isoforms have been described for this gene?

Note: This product is for in vitro research use only