

EXTL3 Antibody

Catalog No: #36453

Orders: order@signalwayantibody.comSupport: tech@signalwayantibody.com

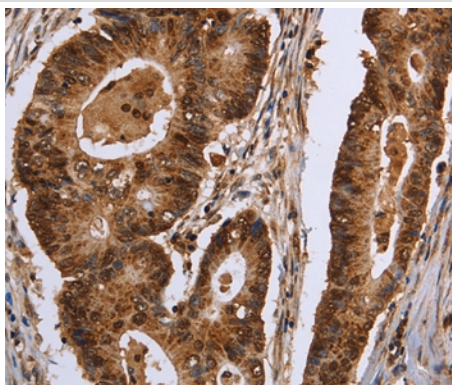
Description

Product Name	EXTL3 Antibody
Host Species	Rabbit
Clonality	Polyclonal
Purification	Antigen affinity purification.
Applications	IHC
Species Reactivity	Hu Ms
Specificity	The antibody detects endogenous levels of total EXTL3 protein.
Immunogen Type	Recombinant Protein
Immunogen Description	Fusion protein corresponding to residues near the C terminal of human exostosin-like glycosyltransferase 3
Target Name	EXTL3
Other Names	RPR; BOTV; REGR; EXTR1; EXTL1L
Accession No.	Swiss-Prot#: O43909NCBI Gene ID: 2137Gene Accssion: BC006363
Uniprot	O43909
GeneID	2137;
Concentration	1.2mg/ml
Formulation	Rabbit IgG in pH7.4 PBS, 0.05% NaN ₃ , 40% Glycerol.
Storage	Store at -20°C

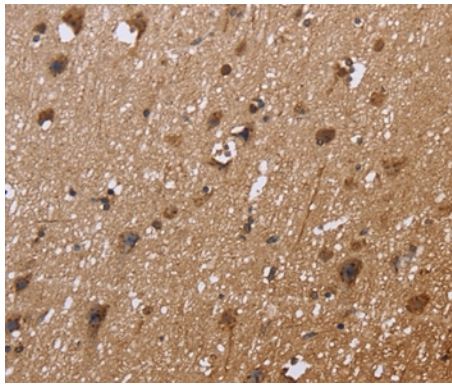
Application Details

Immunohistochemistry: 1:50-1:200

Images



Immunohistochemical analysis of paraffin-embedded Human colon cancer tissue using #36453 at dilution 1/30.



Immunohistochemical analysis of paraffin-embedded Human brain tissue using #36453 at dilution 1/30.

Background

This gene encodes a single-pass membrane protein which functions as a glycosyltransferase. The encoded protein catalyzes the transfer of N-acetylglucosamine to glycosaminoglycan chains. This reaction is important in heparin and heparan sulfate synthesis. Alternative splicing results in the multiple transcript variants.

Note: This product is for in vitro research use only