

FANCG Antibody

Catalog No: #36464

Orders: order@signalwayantibody.comSupport: tech@signalwayantibody.com

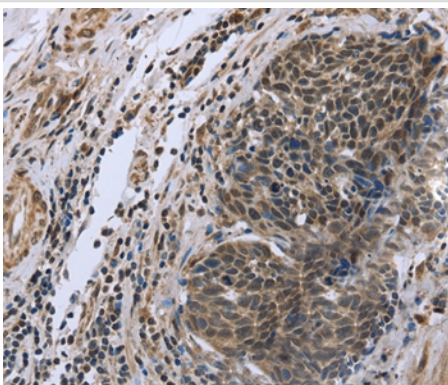
Description

Product Name	FANCG Antibody
Host Species	Rabbit
Clonality	Polyclonal
Purification	Antigen affinity purification.
Applications	IHC
Species Reactivity	Hu
Specificity	The antibody detects endogenous levels of total FANCG protein.
Immunogen Type	Recombinant Protein
Immunogen Description	Fusion protein corresponding to a region derived from internal residues of human Fanconi anemia, complementation group G
Target Name	FANCG
Other Names	FAG; XRCC9
Accession No.	Swiss-Prot#: O15287NCBI Gene ID: 2189Gene Accssion: BC000032
Uniprot	O15287
GeneID	2189;
Concentration	2.3mg/ml
Formulation	Rabbit IgG in pH7.4 PBS, 0.05% NaN ₃ , 40% Glycerol.
Storage	Store at -20°C

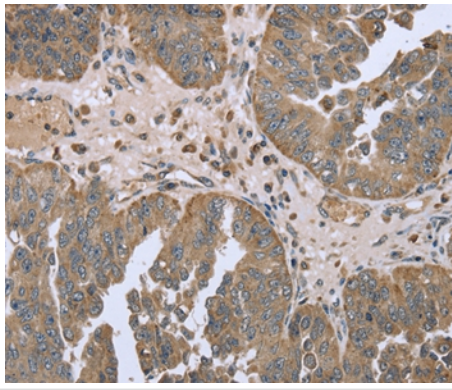
Application Details

Immunohistochemistry: 1:50-1:200

Images



Immunohistochemical analysis of paraffin-embedded Human cervical cancer tissue using #36464 at dilution 1/50.



Immunohistochemical analysis of paraffin-embedded Human ovarian cancer tissue using #36464 at dilution 1/50.

Background

The Fanconi anemia complementation group (FANC) currently includes FANCA, FANCB, FANCC, FANCD1 (also called BRCA2), FANCD2, FANCE, FANCF, FANCG, FANCI, FANCI (also called BRIP1), FANCL, FANCM and FANCN (also called PALB2). The previously defined group FANCH is the same as FANCA. Fanconi anemia is a genetically heterogeneous recessive disorder characterized by cytogenetic instability, hypersensitivity to DNA crosslinking agents, increased chromosomal breakage, and defective DNA repair. The members of the Fanconi anemia complementation group do not share sequence similarity; they are related by their assembly into a common nuclear protein complex. This gene encodes the protein for complementation group G.

Note: This product is for in vitro research use only