

FAR2 Antibody

Catalog No: #36466

Orders: order@signalwayantibody.com

Support: tech@signalwayantibody.com

Description

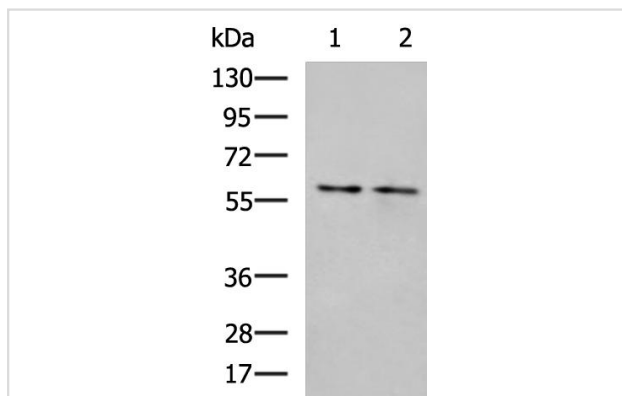
Product Name	FAR2 Antibody
Host Species	Rabbit
Clonality	Polyclonal
Purification	Antigen affinity purification.
Applications	WB IHC
Species Reactivity	Human Mouse
Specificity	The antibody detects endogenous levels of total FAR2 protein.
Immunogen Type	Recombinant Protein
Immunogen Description	Fusion protein of human FAR2
Target Name	FAR2
Other Names	MLSTD1; SDR10E2
Accession No.	Swiss-Prot#: Q96K12NCBI Gene ID: 55711Gene Accssion: BC022267
Uniprot	Q96K12
GeneID	55711;
SDS-PAGE MW	59kd
Concentration	0.7 mg/ml
Formulation	Rabbit IgG in pH7.4 PBS, 0.05% NaN ₃ , 40% Glycerol.
Storage	Store at -20°C

Application Details

WB 1:500-1:2000

IHC 1:50-1:200

Images



Gel: 8%SDS-PAGE

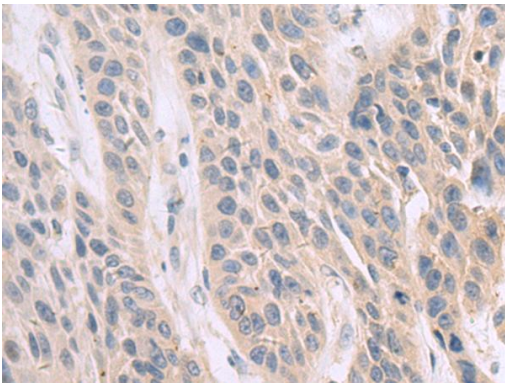
Lysate: 40 ug

Lane 1-2: PC3 and HUVEC cell lysates

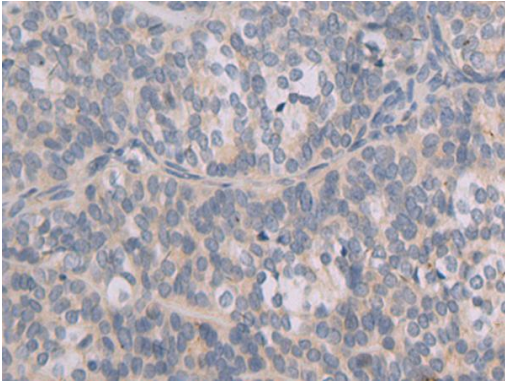
Primary antibody: (FAR2 Antibody) at dilution 1/500

Secondary antibody: Goat anti rabbit IgG at 1/5000 dilution

Exposure time: 15 seconds



The image on the left is immunohistochemistry of paraffin-embedded Human esophagus cancer tissue using (FAR2 Antibody) at dilution 1/50



The image on the left is immunohistochemistry of paraffin-embedded Human thyroid cancer tissue using (FAR2 Antibody) at dilution 1/50

Background

This gene belongs to the short chain dehydrogenase/reductase superfamily. It encodes a reductase enzyme involved in the first step of wax biosynthesis wherein fatty acids are converted to fatty alcohols. The encoded peroxisomal protein utilizes saturated fatty acids of 16 or 18 carbons as preferred substrates. Alternatively spliced transcript variants have been observed for this gene. Related pseudogenes have been identified on chromosomes 2, 14 and 22.

Note: This product is for in vitro research use only