

MYL12B Antibody

Catalog No: #36467

Orders: order@signalwayantibody.com

Support: tech@signalwayantibody.com

Description

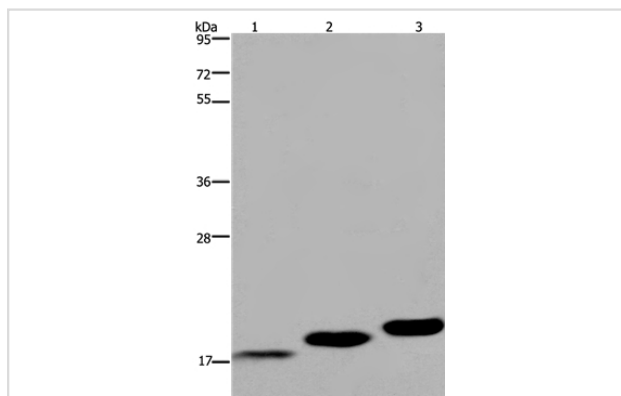
Product Name	MYL12B Antibody
Host Species	Rabbit
Clonality	Polyclonal
Purification	Antigen affinity purification.
Applications	WB IHC
Species Reactivity	Hu Ms
Specificity	The antibody detects endogenous levels of total MYL12B protein.
Immunogen Type	Recombinant Protein
Immunogen Description	Full length fusion protein
Target Name	MYL12B
Other Names	MLC-B; MRLC2
Accession No.	Swiss-Prot#: O14950NCBI Gene ID: 103910Gene Accssion: BC004994
Uniprot	O14950
GeneID	103910;10627;
SDS-PAGE MW	20kd
Concentration	0.9mg/ml
Formulation	Rabbit IgG in pH7.4 PBS, 0.05% NaN ₃ , 40% Glycerol.
Storage	Store at -20°C

Application Details

Western blotting: 1:500-1:2000

Immunohistochemistry: 1:25-1:100

Images



Gel: 8%SDS-PAGE

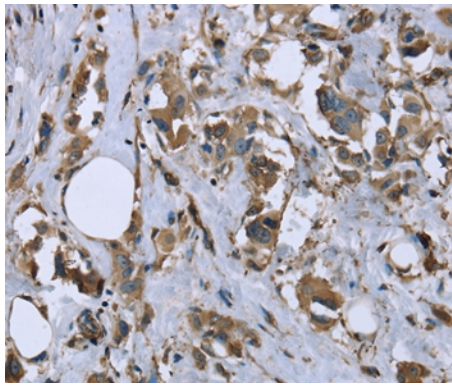
Lysates (from left to right): Mouse skeletal muscle, heart and bladder tissue

Amount of lysate: 40ug per lane

Primary antibody: 1/450 dilution

Secondary antibody dilution: 1/8000

Exposure time: 20 seconds



Immunohistochemical analysis of paraffin-embedded Human breast cancer tissue using #36467 at dilution 1/20.

Background

The activity of nonmuscle myosin II (see MYH9; MIM 160775) is regulated by phosphorylation of a regulatory light chain, such as MRLC2. This phosphorylation results in higher MgATPase activity and the assembly of myosin II filaments?

Note: This product is for in vitro research use only