

FASTKD5 Antibody

Catalog No: #36469

Orders: order@signalwayantibody.comSupport: tech@signalwayantibody.com

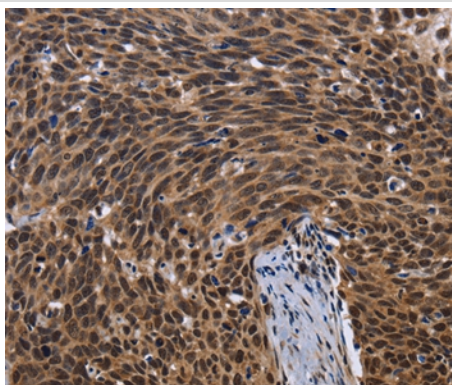
Description

Product Name	FASTKD5 Antibody
Host Species	Rabbit
Clonality	Polyclonal
Purification	Antigen affinity purification.
Applications	IHC
Species Reactivity	Hu
Specificity	The antibody detects endogenous levels of total FASTKD5 protein.
Immunogen Type	Recombinant Protein
Immunogen Description	Fusion protein corresponding to a region derived from internal residues of human FAST kinase domains 5
Target Name	FASTKD5
Other Names	dJ1187M17.5
Accession No.	Swiss-Prot#: Q7L8L6NCBI Gene ID: 60493Gene Accssion: NP_068598
Uniprot	Q7L8L6
GeneID	60493;
Concentration	1.6mg/ml
Formulation	Rabbit IgG in pH7.4 PBS, 0.05% NaN ₃ , 40% Glycerol.
Storage	Store at -20°C

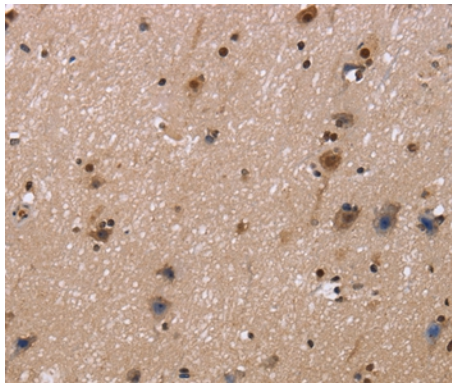
Application Details

Immunohistochemistry: 1:50-1:200

Images



Immunohistochemical analysis of paraffin-embedded Human cervical cancer tissue using #36469 at dilution 1/40.



Immunohistochemical analysis of paraffin-embedded Human brain tissue using #36469 at dilution 1/40.

Background

Representing about 2% of human DNA, chromosome 20 consists of approximately 63 million bases and 600 genes. Chromosome 20 contains a region with numerous genes expressed in the epididymis which are thought important for seminal production and some viewed as potential targets for male contraception. The PRNP gene encoding the prion protein associated with spongiform encephalopathies, like Creutzfeldt-Jakob disease, is found on chromosome 20. Amyotrophic lateral sclerosis, spinal muscular atrophy, ring chromosome 20 epilepsy syndrome and Alagille syndrome are also associated with chromosome 20.

Note: This product is for in vitro research use only