

FASTKD2 Antibody

Catalog No: #36470

Orders: order@signalwayantibody.comSupport: tech@signalwayantibody.com

Description

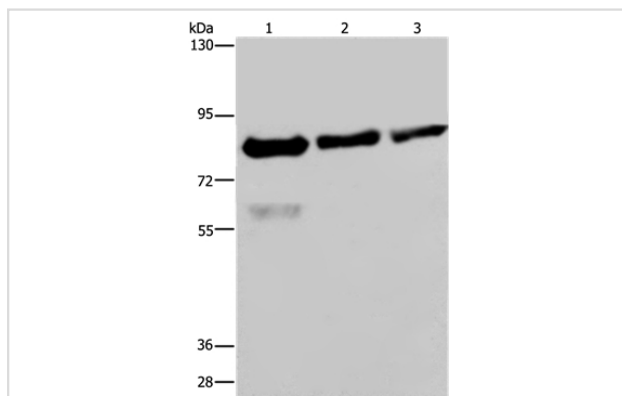
Product Name	FASTKD2 Antibody
Host Species	Rabbit
Clonality	Polyclonal
Purification	Antigen affinity purification.
Applications	WB IHC
Species Reactivity	Hu
Specificity	The antibody detects endogenous levels of total FASTKD2 protein.
Immunogen Type	Recombinant Protein
Immunogen Description	Fusion protein corresponding to a region derived from internal residues of human FAST kinase domains 2
Target Name	FASTKD2
Other Names	KIAA0971
Accession No.	Swiss-Prot#: Q9NYY8NCBI Gene ID: 22868Gene Accssion: BC001544
Uniprot	Q9NYY8
GeneID	22868;
SDS-PAGE MW	81kd
Concentration	2mg/ml
Formulation	Rabbit IgG in pH7.4 PBS, 0.05% NaN ₃ , 40% Glycerol.
Storage	Store at -20°C

Application Details

Western blotting: 1:500-1:2000

Immunohistochemistry: 1:50-1:200

Images



Gel: 6%SDS-PAGE

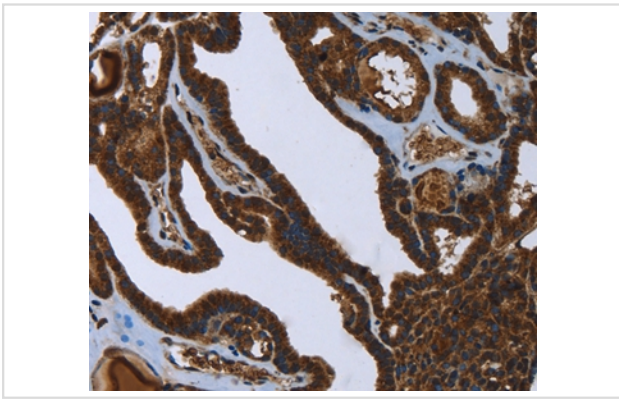
Lysates (from left to right): HeLa, LoVo and HepG2 cell

Amount of lysate: 40ug per lane

Primary antibody: 1/500 dilution

Secondary antibody dilution: 1/8000

Exposure time: 40 seconds



Immunohistochemical analysis of paraffin-embedded Human thyroid cancer tissue using #36470 at dilution 1/45.

Background

This gene encodes a protein that is localized in the mitochondrial inner compartment and that may play a role in mitochondrial apoptosis. Nonsense mutations have been reported to result in cytochrome c oxidase deficiency.

Note: This product is for in vitro research use only