

MX1 antibody

Catalog No: #22124

Orders: order@signalwayantibody.com

Support: tech@signalwayantibody.com

Description

Product Name	MX1 antibody
Host Species	Rabbit
Clonality	Polyclonal
Purification	Purified by antigen-affinity chromatography.
Applications	WB IHC
Species Reactivity	Hu
Immunogen Type	Recombinant protein
Immunogen Description	Recombinant protein fragment contain a sequence corresponding to a region within amino acids 1 and 246 of MX1
Target Name	MX1
Accession No.	Swiss-Prot:P20591 Gene ID:4599
Uniprot	P20591
GeneID	4599;
Concentration	1mg/ml
Formulation	Supplied in 0.1M Tris-buffered saline with 10% Glycerol (pH7.0). 0.01% Thimerosal was added as a preservative.
Storage	Store at -20°C for long term preservation (recommended). Store at 4°C for short term use.

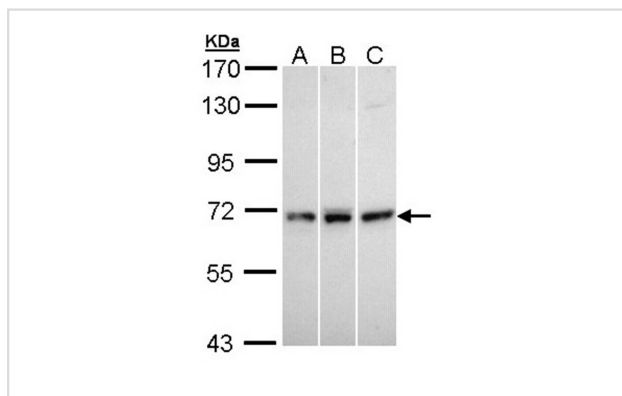
Application Details

Predicted MW: 76kd

Western blotting: 1:500-1:3000

Immunohistochemistry: 1:100-1:500

Images



Sample (30 ug of whole cell lysate)

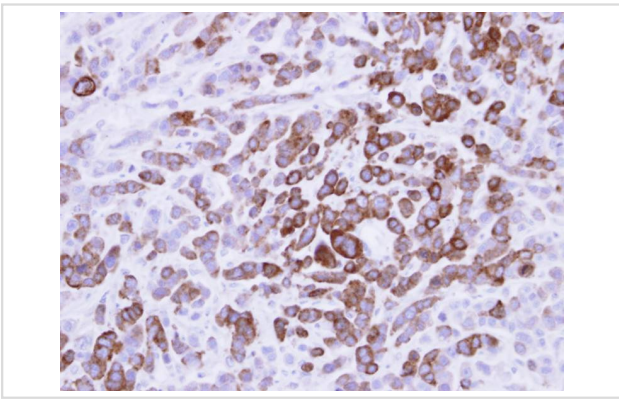
A: H1299

B: HeLa

C: Raji

7.5% SDS PAGE

Primary antibody diluted at 1: 5000



Immunohistochemical analysis of paraffin-embedded MDA-MB-468 xenograft, using MX1 antibody at 1: 500 dilution.

Background

In mouse, the interferon-inducible Mx protein is responsible for a specific antiviral state against influenza virus infection. The protein encoded by this gene is similar to the mouse protein as determined by its antigenic relatedness, induction conditions, physicochemical properties, and amino acid analysis. This cytoplasmic protein is a member of both the dynamin family and the family of large GTPases. Two transcript variants encoding the same protein have been found for this gene. [provided by RefSeq]

Note: This product is for in vitro research use only