

FGL2 Antibody

Catalog No: #36481

Orders: order@signalwayantibody.comSupport: tech@signalwayantibody.com

Description

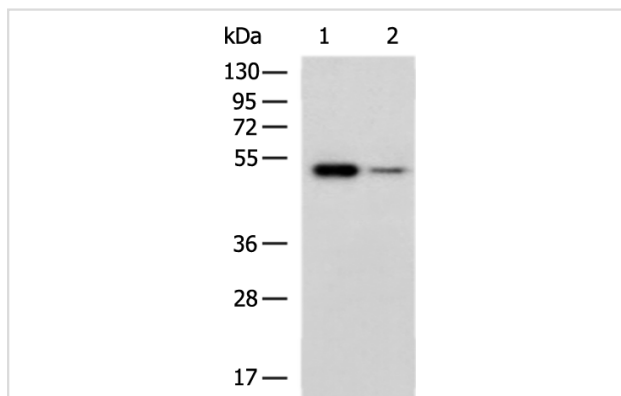
Product Name	FGL2 Antibody
Host Species	Rabbit
Clonality	Polyclonal
Purification	Antigen affinity purification.
Applications	WB,IHC,ELISA
Species Reactivity	Hu Ms
Specificity	The antibody detects endogenous levels of total FGL2 protein.
Immunogen Type	Recombinant Protein
Immunogen Description	Fusion protein of human FGL2
Target Name	FGL2
Other Names	T49; pT49
Accession No.	Swiss-Prot#: Q14314NCBI Gene ID: 10875Gene Accssion: BC033820
Uniprot	Q14314
GeneID	10875;
Calculated MW	50kDa
Concentration	0.6mg/ml
Formulation	Rabbit IgG in pH7.4 PBS, 0.05% NaN ₃ , 40% Glycerol.
Storage	Store at -20°C

Application Details

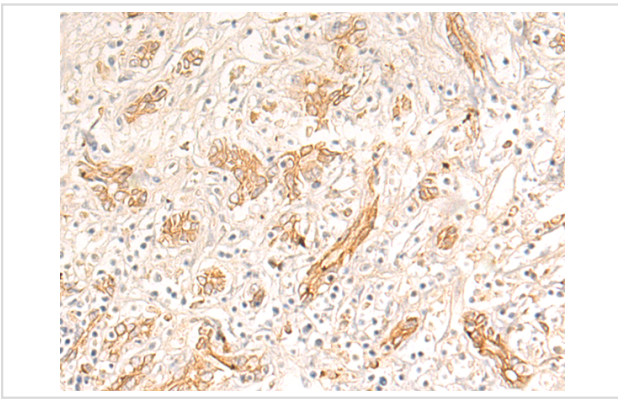
Western blotting: 1:500-1:2000

IHC dilution: 1:50-1:200

Images



Gel: 8%SDS-PAGE Lysate: 40 μ g Lane 1-2: Mouse liver tissue, Rat liver tissue lysates
Primary antibody: FGL2
Antibody at dilution 1/600
Secondary antibody: Goat anti rabbit IgG at 1/5000 dilution
Exposure time: 40 seconds



The image is immunohistochemistry of paraffin-embedded Human liver cancer tissue using FGL2 Antibody at dilution 1/50. (Original magnification: \times 200)

Background

The protein encoded by this gene is a secreted protein that is similar to the beta- and gamma-chains of fibrinogen. The carboxyl-terminus of the encoded protein consists of the fibrinogen-related domains (FRED). The encoded protein forms a tetrameric complex which is stabilized by interchain disulfide bonds. This protein may play a role in physiologic functions at mucosal sites.

Note: This product is for in vitro research use only