

GALT Antibody

Catalog No: #36494

Orders: order@signalwayantibody.comSupport: tech@signalwayantibody.com

Description

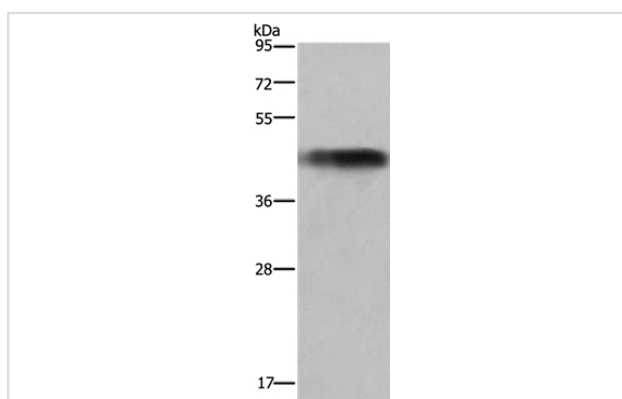
Product Name	GALT Antibody
Host Species	Rabbit
Clonality	Polyclonal
Purification	Antigen affinity purification.
Applications	WB IHC
Species Reactivity	Hu
Specificity	The antibody detects endogenous levels of total GALT protein.
Immunogen Type	Recombinant Protein
Immunogen Description	Fusion protein corresponding to a region derived from internal residues of human galactose-1-phosphate uridylyltransferase
Target Name	GALT
Other Names	Gal-1-P uridylyltransferase;galactose-1-phosphate uridyl transferase
Accession No.	Swiss-Prot#: P07902NCBI Gene ID: 2592Gene Accssion: NP_000146
Uniprot	P07902
GeneID	2592;
SDS-PAGE MW	43kd
Concentration	1.2mg/ml
Formulation	Rabbit IgG in pH7.4 PBS, 0.05% NaN ₃ , 40% Glycerol.
Storage	Store at -20°C

Application Details

Western blotting: 1:500-1:2000

Immunohistochemistry: 1:50-1:200

Images



Gel: 8%SDS-PAGE

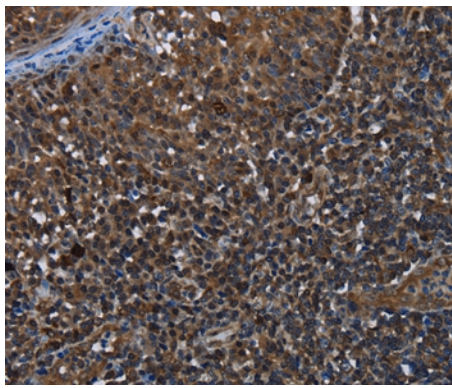
Lysates (from left to right): Human fetal liver tissue

Amount of lysate: 40ug per lane

Primary antibody: 1/300 dilution

Secondary antibody dilution: 1/8000

Exposure time: 10 seconds



Immunohistochemical analysis of paraffin-embedded Human tonsil tissue using #36494 at dilution 1/30.

Background

Galactose-1-phosphate uridyl transferase (GALT) catalyzes the second step of the Leloir pathway of galactose metabolism, namely the conversion of UDP-glucose + galactose-1-phosphate to glucose-1-phosphate + UDP-galactose. The absence of this enzyme results in classic galactosemia in humans and can be fatal in the newborn period if lactose is not removed from the diet. The pathophysiology of galactosemia has not been clearly defined. Two transcript variants encoding different isoforms have been found for this gene.

Note: This product is for in vitro research use only