

## GBP5 Antibody

Catalog No: #36497

Orders: [order@signalwayantibody.com](mailto:order@signalwayantibody.com)Support: [tech@signalwayantibody.com](mailto:tech@signalwayantibody.com)

## Description

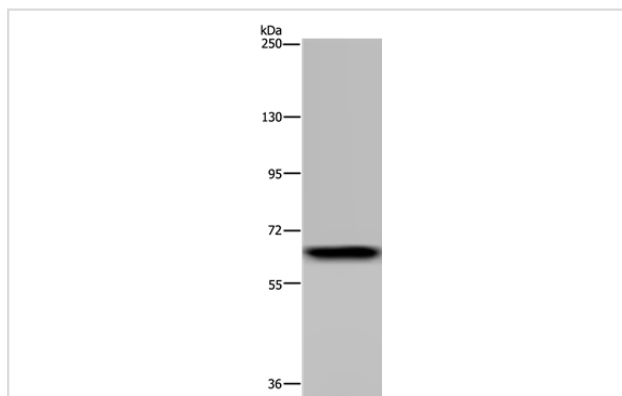
Product Name	GBP5 Antibody
Host Species	Rabbit
Clonality	Polyclonal
Purification	Antigen affinity purification.
Applications	WB IHC
Species Reactivity	Hu
Specificity	The antibody detects endogenous levels of total GBP5 protein.
Immunogen Type	Recombinant Protein
Immunogen Description	Fusion protein corresponding to residues near the N terminal of human guanylate binding protein 5
Target Name	GBP5
Other Names	GBP-5
Accession No.	Swiss-Prot#: Q96PP8NCBI Gene ID: 115362Gene Accssion: BC031639
Uniprot	Q96PP8
GeneID	115362;
SDS-PAGE MW	67kd
Concentration	0.43mg/ml
Formulation	Rabbit IgG in pH7.4 PBS, 0.05% NaN <sub>3</sub> , 40% Glycerol.
Storage	Store at -20°C

## Application Details

Western blotting: 1:200-1:1000

Immunohistochemistry: 1:50-1:200

## Images



Gel: 6%SDS-PAGE

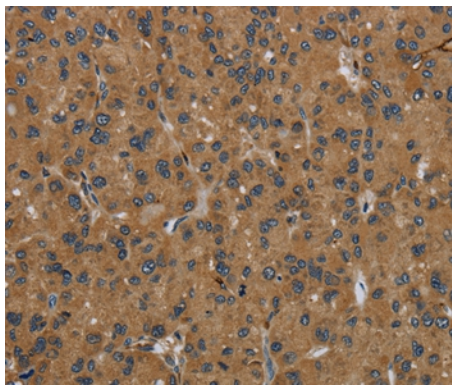
Lysates (from left to right): Human placenta tissue

Amount of lysate: 40ug per lane

Primary antibody: 1/300 dilution

Secondary antibody dilution: 1/8000

Exposure time: 5 minutes



Immunohistochemical analysis of paraffin-embedded Human liver cancer tissue using #36497 at dilution 1/50.

## Background

GBP5 (guanylate binding protein 5), also known as GBP-TA antigen, is a 586 amino acid protein that localizes to the cytoplasmic side of the cell membrane. Belonging to the interferon (IFN)-inducible guanylate-binding protein (GBP) family, GBP5 may be involved in the inflammatory response or with cell proliferation and is suggested to have possible cancer-related functions. The gene encoding GBP5 maps to human chromosome 1, which spans 260 million base pairs, contains over 3,000 genes and comprises nearly 8% of the human genome.

Note: This product is for in vitro research use only