

## GCKR Antibody

Catalog No: #36500

Orders: order@signalwayantibody.com

Support: tech@signalwayantibody.com

## Description

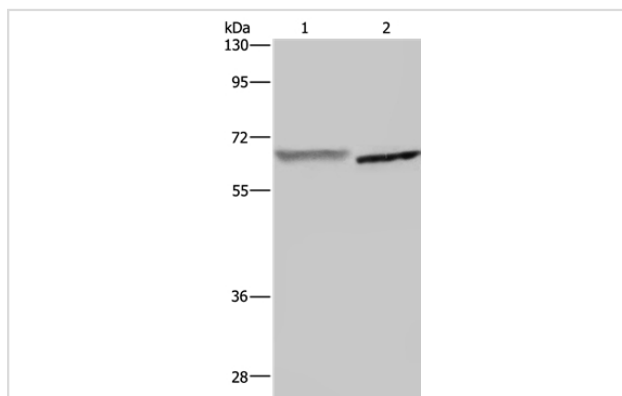
Product Name	GCKR Antibody
Host Species	Rabbit
Clonality	Polyclonal
Purification	Antigen affinity purification.
Applications	WB IHC
Species Reactivity	Hu Ms
Specificity	The antibody detects endogenous levels of total GCKR protein.
Immunogen Type	Recombinant Protein
Immunogen Description	Fusion protein corresponding to a region derived from internal residues of human glucokinase (hexokinase 4) regulator
Target Name	GCKR
Other Names	GKRP; FGQTL5
Accession No.	Swiss-Prot#: Q14397NCBI Gene ID: 2646Gene Accssion: BC130481
Uniprot	Q14397
GeneID	2646;
SDS-PAGE MW	69kd
Concentration	2.4mg/ml
Formulation	Rabbit IgG in pH7.4 PBS, 0.05% NaN <sub>3</sub> , 40% Glycerol.
Storage	Store at -20°C

## Application Details

Western blotting: 1:200-1:1000

Immunohistochemistry: 1:50-1:200

## Images



Gel: 8%SDS-PAGE

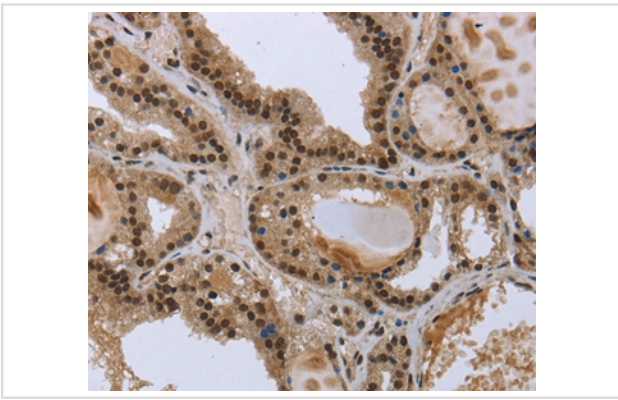
Lysates (from left to right): Human placenta and mouse liver tissue

Amount of lysate: 40ug per lane

Primary antibody: 1/400 dilution

Secondary antibody dilution: 1/8000

Exposure time: 2 minutes



Immunohistochemical analysis of paraffin-embedded Human colon cancer tissue using #36500 at dilution 1/50.

## Background

This gene encodes a protein belonging to the GCKR subfamily of the SIS (Sugar ISomerase) family of proteins. The gene product is a regulatory protein that inhibits glucokinase in liver and pancreatic islet cells by binding non-covalently to form an inactive complex with the enzyme. This gene is considered a susceptibility gene candidate for a form of maturity-onset diabetes of the young (MODY).

Note: This product is for in vitro research use only