

## GPAM Antibody

Catalog No: #36513

Orders: [order@signalwayantibody.com](mailto:order@signalwayantibody.com)Support: [tech@signalwayantibody.com](mailto:tech@signalwayantibody.com)

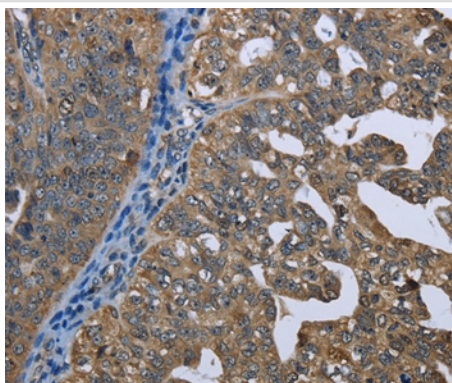
## Description

Product Name	GPAM Antibody
Host Species	Rabbit
Clonality	Polyclonal
Purification	Antigen affinity purification.
Applications	IHC
Species Reactivity	Hu
Specificity	The antibody detects endogenous levels of total GPAM protein.
Immunogen Type	Recombinant Protein
Immunogen Description	Fusion protein corresponding to residues near the C terminal of human glycerol-3-phosphate acyltransferase, mitochondrial
Target Name	GPAM
Other Names	GPAT; GPAT1
Accession No.	Swiss-Prot#: Q9HCL2NCBI Gene ID: 57678Gene Accssion: NP_065969
Uniprot	Q9HCL2
GeneID	57678;
Concentration	2.8mg/ml
Formulation	Rabbit IgG in pH7.4 PBS, 0.05% NaN <sub>3</sub> , 40% Glycerol.
Storage	Store at -20°C

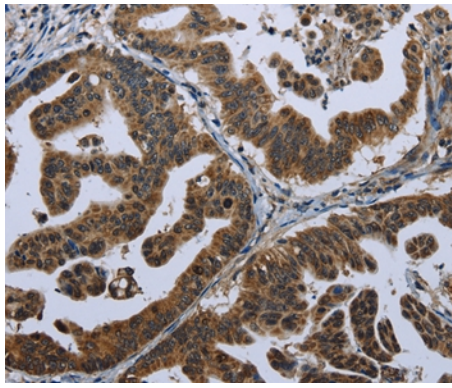
## Application Details

Immunohistochemistry: 1:100-1:300

## Images



Immunohistochemical analysis of paraffin-embedded Human ovarian cancer tissue using #36513 at dilution 1/60.



Immunohistochemical analysis of paraffin-embedded Human gastric cancer tissue using #36513 at dilution 1/60.

## Background

This gene encodes a mitochondrial enzyme which prefers saturated fatty acids as its substrate for the synthesis of glycerolipids. This metabolic pathway's first step is catalyzed by the encoded enzyme. Two forms for this enzyme exist, one in the mitochondria and one in the endoplasmic reticulum. Two alternatively spliced transcript variants have been described for this gene.

Note: This product is for in vitro research use only