

HIST1H2AH Antibody

Catalog No: #36518

Orders: order@signalwayantibody.com

Support: tech@signalwayantibody.com

Description

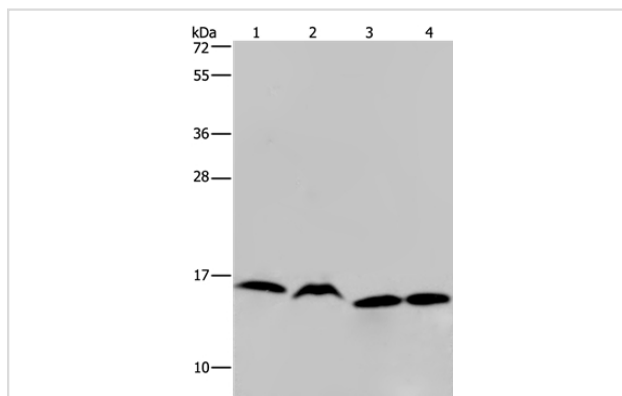
Product Name	HIST1H2AH Antibody
Host Species	Rabbit
Clonality	Polyclonal
Purification	Antigen affinity purification.
Applications	WB IHC
Species Reactivity	Hu
Specificity	The antibody detects endogenous levels of total HIST1H2AH protein.
Immunogen Type	Recombinant Protein
Immunogen Description	Full length fusion protein
Target Name	HIST1H2AH
Other Names	H2AH; H2A/S; H2AFALii; dJ86C11.1
Accession No.	Swiss-Prot#: Q96KK5NCBI Gene ID: 85235Gene Accssion: NP_542163
Uniprot	Q96KK5
GeneID	85235;
SDS-PAGE MW	14kd
Concentration	2mg/ml
Formulation	Rabbit IgG in pH7.4 PBS, 0.05% NaN ₃ , 40% Glycerol.
Storage	Store at -20°C

Application Details

Western blotting: 1:500-1:2000

Immunohistochemistry: 1:50-1:200

Images



Gel: 10%SDS-PAGE

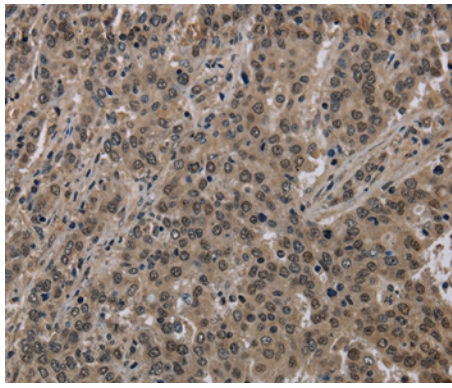
Lysates (from left to right): K562, Raji, HeLa and 293T cell

Amount of lysate: 40ug per lane

Primary antibody: 1/250 dilution

Secondary antibody dilution: 1/8000

Exposure time: 10 seconds



Immunohistochemical analysis of paraffin-embedded Human liver cancer tissue using #36518 at dilution 1/40.

Background

Histones are basic nuclear proteins that are responsible for the nucleosome structure of the chromosomal fiber in eukaryotes. Two molecules of each of the four core histones (H2A, H2B, H3, and H4) form an octamer, around which approximately 146 bp of DNA is wrapped in repeating units, called nucleosomes. The linker histone, H1, interacts with linker DNA between nucleosomes and functions in the compaction of chromatin into higher order structures. This gene is intronless and encodes a member of the histone H2A family. Transcripts from this gene lack polyA tails but instead contain a palindromic termination element. This gene is found in the histone microcluster on chromosome 6p21.33.?

Note: This product is for in vitro research use only