

HMGCL Antibody

Catalog No: #36521

Orders: order@signalwayantibody.com

Support: tech@signalwayantibody.com

Description

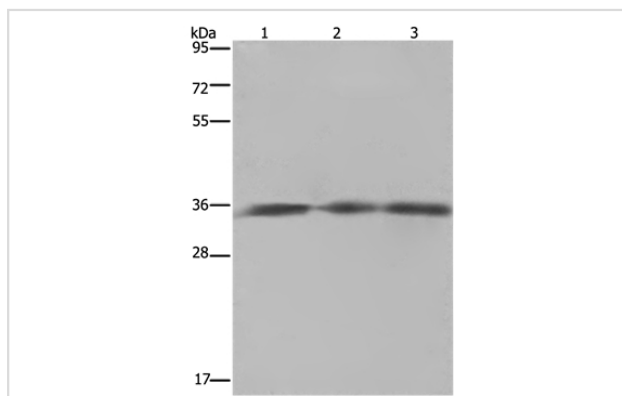
Product Name	HMGCL Antibody
Host Species	Rabbit
Clonality	Polyclonal
Purification	Antigen affinity purification.
Applications	WB IHC
Species Reactivity	Hu Ms
Specificity	The antibody detects endogenous levels of total HMGCL protein.
Immunogen Type	Recombinant Protein
Immunogen Description	Fusion protein corresponding to a region derived from internal residues of human 3-hydroxymethyl-3-methylglutaryl-CoA lyase
Target Name	HMGCL
Other Names	HL
Accession No.	Swiss-Prot#: P35914NCBI Gene ID: 3155Gene Accssion: BC010570
Uniprot	P35914
GeneID	3155;
SDS-PAGE MW	34kd
Concentration	0.5mg/ml
Formulation	Rabbit IgG in pH7.4 PBS, 0.05% NaN ₃ , 40% Glycerol.
Storage	Store at -20°C

Application Details

Western blotting: 1:200-1:1000

Immunohistochemistry: 1:50-1:200

Images



Gel: 8%SDS-PAGE

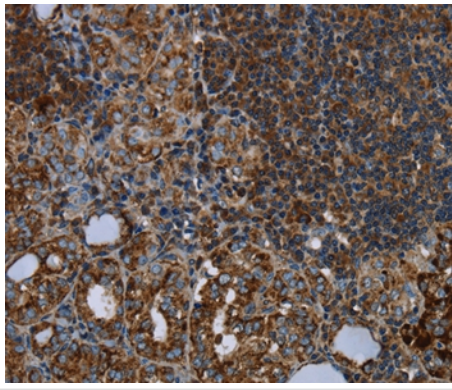
Lysates (from left to right): SKOV3 cell, mouse heart and brain tissue

Amount of lysate: 40ug per lane

Primary antibody: 1/150 dilution

Secondary antibody dilution: 1/8000

Exposure time: 5 seconds



Immunohistochemical analysis of paraffin-embedded Human thyroid cancer tissue using #36521 at dilution 1/20.

Background

The protein encoded by this gene belongs to the HMG-CoA lyase family. It is a mitochondrial enzyme that catalyzes the final step of leucine degradation and plays a key role in ketone body formation. Mutations in this gene are associated with HMG-CoA lyase deficiency. Alternatively spliced transcript variants encoding different isoforms have been found for this gene.?

Note: This product is for in vitro research use only