

RBMX Antibody

Catalog No: #36522

Orders: order@signalwayantibody.com

Support: tech@signalwayantibody.com

Description

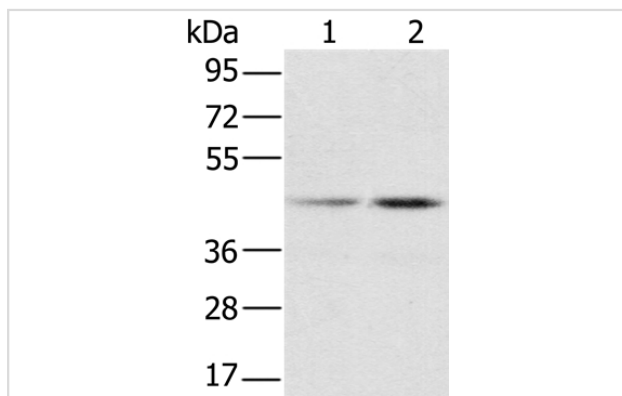
Product Name	RBMX Antibody
Host Species	Rabbit
Clonality	Polyclonal
Purification	Antigen affinity purification.
Applications	WB IHC
Species Reactivity	Hu
Specificity	The antibody detects endogenous levels of total RBMX protein.
Immunogen Type	Recombinant Protein
Immunogen Description	Fusion protein corresponding to a region derived from internal residues of human RNA binding motif protein, X-linked
Target Name	RBMX
Other Names	RNMX; HNRPG; HNRNPG; RBMXP1; RBMXRT; hnRNP-G
Accession No.	Swiss-Prot#: P38159NCBI Gene ID: 27316Gene Accssion: BC006550/P38159
Uniprot	P38159
GeneID	27316;
SDS-PAGE MW	42kd
Concentration	2.6mg/ml
Formulation	Rabbit IgG in pH7.4 PBS, 0.05% NaN ₃ , 40% Glycerol.
Storage	Store at -20°C

Application Details

Western blotting: 1:500-1:2000

Immunohistochemistry: 1:50-1:200

Images



Gel: 8%SDS-PAGE

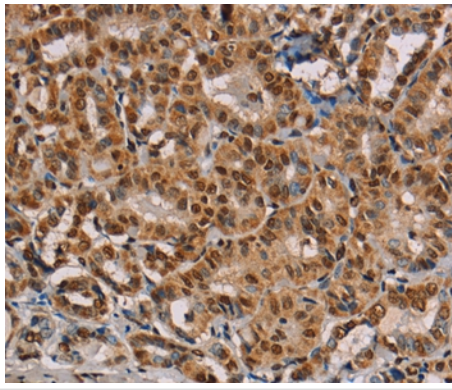
Lysates (from left to right): HeLa and K562 cell

Amount of lysate: 40ug per lane

Primary antibody: 1/800 dilution

Secondary antibody dilution: 1/8000

Exposure time: 5 seconds



Immunohistochemical analysis of paraffin-embedded Human thyroid cancer tissue using #36522 at dilution 1/45.

Background

This gene belongs to the RBMY gene family which includes candidate Y chromosome spermatogenesis genes. This gene, an active X chromosome homolog of the Y chromosome RBMY gene, is widely expressed whereas the RBMY gene evolved a male-specific function in spermatogenesis. Pseudogenes of this gene, found on chromosomes 1, 4, 9, 11, and 6, were likely derived by retrotransposition from the original gene. Alternatively spliced transcript variants encoding different isoforms have been identified. A snoRNA gene (SNORD61) is found in one of its introns.

Note: This product is for in vitro research use only