

## HOMER1 Antibody

Catalog No: #36523

Orders: order@signalwayantibody.com

Support: tech@signalwayantibody.com

## Description

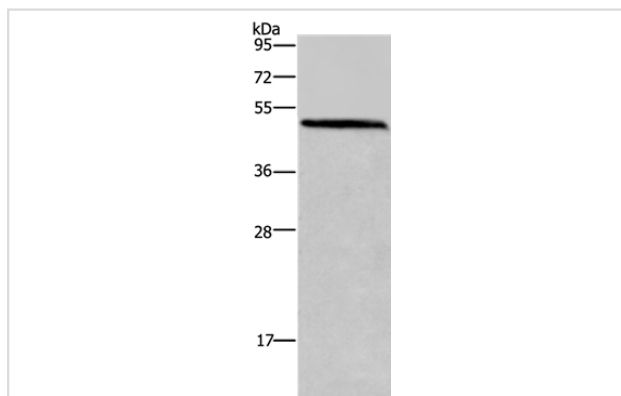
Product Name	HOMER1 Antibody
Host Species	Rabbit
Clonality	Polyclonal
Purification	Antigen affinity purification.
Applications	WB IHC
Species Reactivity	Hu Ms
Specificity	The antibody detects endogenous levels of total HOMER1 protein.
Immunogen Type	Recombinant Protein
Immunogen Description	Fusion protein corresponding to residues near the C terminal of human homer homolog 1
Target Name	HOMER1
Other Names	HOMER; SYN47; Ves-1; HOMER1A; HOMER1B; HOMER1C
Accession No.	Swiss-Prot#: Q86YM7NCBI Gene ID: 9456Gene Accsion: BC015502
Uniprot	Q86YM7
GeneID	9456;
SDS-PAGE MW	40kd
Concentration	2.4mg/ml
Formulation	Rabbit IgG in pH7.4 PBS, 0.05% NaN <sub>3</sub> , 40% Glycerol.
Storage	Store at -20°C

## Application Details

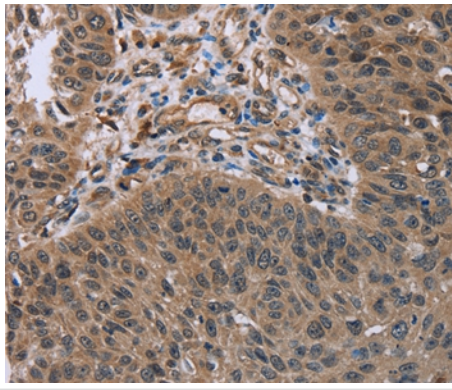
Western blotting: 1:500-1:2000

Immunohistochemistry: 1:50-1:200

## Images



Gel: 10%SDS-PAGE  
 Lysates (from left to right): Mouse brain tissue  
 Amount of lysate: 40ug per lane  
 Primary antibody: 1/400 dilution  
 Secondary antibody dilution: 1/8000  
 Exposure time: 10 seconds



Immunohistochemical analysis of paraffin-embedded Human lung cancer tissue using #36523 at dilution 1/50.

## Background

This gene encodes a member of the homer family of dendritic proteins. Members of this family regulate group 1 metabotropic glutamate receptor function.

Note: This product is for in vitro research use only