

## HOMER2 Antibody

Catalog No: #36524

Orders: [order@signalwayantibody.com](mailto:order@signalwayantibody.com)Support: [tech@signalwayantibody.com](mailto:tech@signalwayantibody.com)

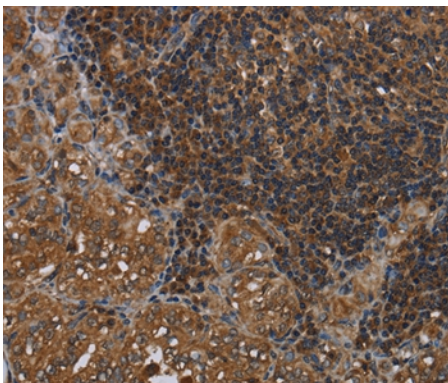
## Description

Product Name	HOMER2 Antibody
Host Species	Rabbit
Clonality	Polyclonal
Purification	Antigen affinity purification.
Applications	IHC
Species Reactivity	Hu
Specificity	The antibody detects endogenous levels of total HOMER2 protein.
Immunogen Type	Recombinant Protein
Immunogen Description	Fusion protein corresponding to residues near the C terminal of human homer homolog 2
Target Name	HOMER2
Other Names	CPD; ACPD; VESL-2; HOMER-2
Accession No.	Swiss-Prot#: Q9NSB8NCBI Gene ID: 9455Gene Accssion: BC012109
Uniprot	Q9NSB8
GeneID	9455;
Concentration	1.8mg/ml
Formulation	Rabbit IgG in pH7.4 PBS, 0.05% NaN <sub>3</sub> , 40% Glycerol.
Storage	Store at -20°C

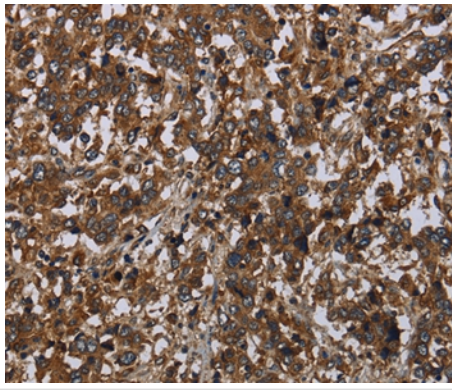
## Application Details

Immunohistochemistry: 1:50-1:200

## Images



Immunohistochemical analysis of paraffin-embedded Human thyroid cancer tissue using #36524 at dilution 1/40.



Immunohistochemical analysis of paraffin-embedded Human liver cancer tissue using #36524 at dilution 1/40.

## Background

This gene encodes a member of the homer family of dendritic proteins. Members of this family regulate group 1 metabotropic glutamate receptor function. The encoded protein is a postsynaptic density scaffolding protein. Alternative splicing results in multiple transcript variants. Two related pseudogenes have been identified on chromosome 14.

Note: This product is for in vitro research use only