

HACL1 Antibody

Catalog No: #36525

Orders: order@signalwayantibody.com

Support: tech@signalwayantibody.com

Description

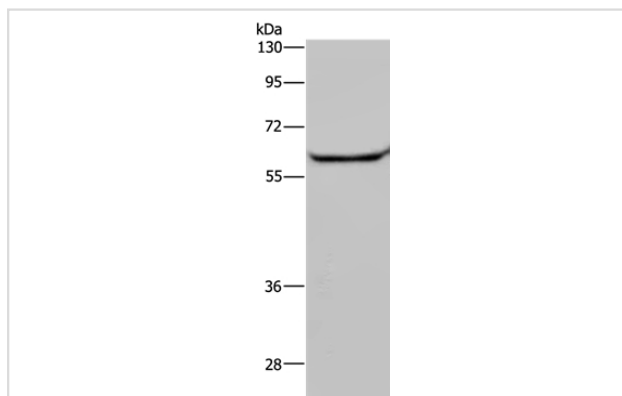
Product Name	HACL1 Antibody
Host Species	Rabbit
Clonality	Polyclonal
Purification	Antigen affinity purification.
Applications	WB IHC
Species Reactivity	Hu
Specificity	The antibody detects endogenous levels of total HACL1 protein.
Immunogen Type	Recombinant Protein
Immunogen Description	Fusion protein corresponding to a region derived from internal residues of human 2-hydroxyacyl-CoA lyase 1
Target Name	HACL1
Other Names	HPCL; HPCL2; PHYH2; 2-HPCL
Accession No.	Swiss-Prot#: Q9UJ83NCBI Gene ID: 26061Gene Accssion: BC001627
Uniprot	Q9UJ83
GeneID	26061;
SDS-PAGE MW	64kd
Concentration	0.8mg/ml
Formulation	Rabbit IgG in pH7.4 PBS, 0.05% NaN ₃ , 40% Glycerol.
Storage	Store at -20°C

Application Details

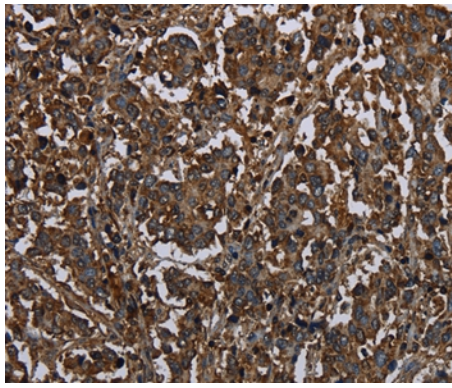
Western blotting: 1:200-1:1000

Immunohistochemistry: 1:50-1:200

Images



Gel: 8%SDS-PAGE
 Lysates (from left to right): Human testis tissue
 Amount of lysate: 40ug per lane
 Primary antibody: 1/200 dilution
 Secondary antibody dilution: 1/8000
 Exposure time: 30 seconds



Immunohistochemical analysis of paraffin-embedded Human liver cancer tissue using #36525 at dilution 1/20.

Background

HACL1 (2-hydroxyacyl-CoA lyase 1) is also known as HPCL or 2-HPCL (2-hydroxyphytanoyl-CoA lyase) and is a 578 amino acid protein. HACL1 is abundantly expressed in liver, and is also expressed in kidney, heart and skeletal muscle, where it is localized to peroxisomes. HACL1 functions in lipid metabolism as well as fatty acid metabolism and is able to form homotetramers.?

Note: This product is for in vitro research use only