

HSD17B6 Antibody

Catalog No: #36533

Orders: order@signalwayantibody.com

Support: tech@signalwayantibody.com

Description

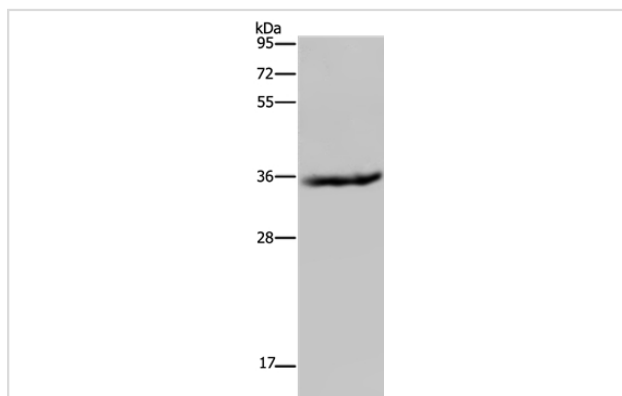
Product Name	HSD17B6 Antibody
Host Species	Rabbit
Clonality	Polyclonal
Purification	Antigen affinity purification.
Applications	WB IHC
Species Reactivity	Hu Ms
Specificity	The antibody detects endogenous levels of total HSD17B6 protein.
Immunogen Type	Recombinant Protein
Immunogen Description	Fusion protein corresponding to a region derived from internal residues of human hydroxysteroid (17-beta) dehydrogenase 6
Target Name	HSD17B6
Other Names	HSE; RODH; SDR9C6
Accession No.	Swiss-Prot#: O14756NCBI Gene ID: 8630Gene Accssion: BC020710
Uniprot	O14756
GeneID	8630;
SDS-PAGE MW	36kd
Concentration	0.8mg/ml
Formulation	Rabbit IgG in pH7.4 PBS, 0.05% NaN ₃ , 40% Glycerol.
Storage	Store at -20°C

Application Details

Western blotting: 1:200-1:1000

Immunohistochemistry: 1:25-1:100

Images



Gel: 10%SDS-PAGE

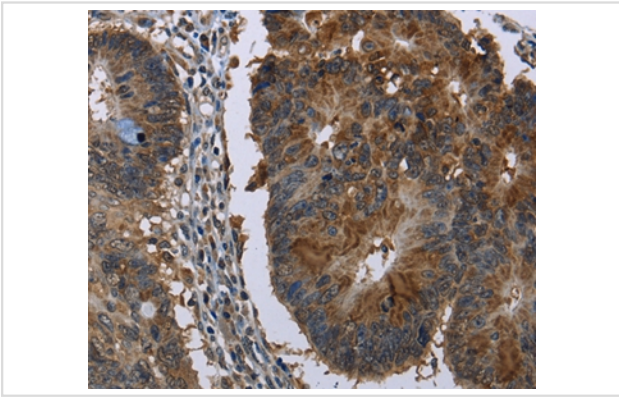
Lysates (from left to right): Mouse liver tissue

Amount of lysate: 40ug per lane

Primary antibody: 1/200 dilution

Secondary antibody dilution: 1/8000

Exposure time: 1 minute



Immunohistochemical analysis of paraffin-embedded Human colon cancer tissue using #36533 at dilution 1/20.

Background

The protein encoded by this gene has both oxidoreductase and epimerase activities and is involved in androgen catabolism. The oxidoreductase activity can convert 3 alpha-adiol to dihydrotestosterone, while the epimerase activity can convert androsterone to epi-androsterone. Both reactions use NAD⁺ as the preferred cofactor. This gene is a member of the retinol dehydrogenase family.

Note: This product is for in vitro research use only