

## ICAM4 Antibody

Catalog No: #36543

Orders: [order@signalwayantibody.com](mailto:order@signalwayantibody.com)Support: [tech@signalwayantibody.com](mailto:tech@signalwayantibody.com)

## Description

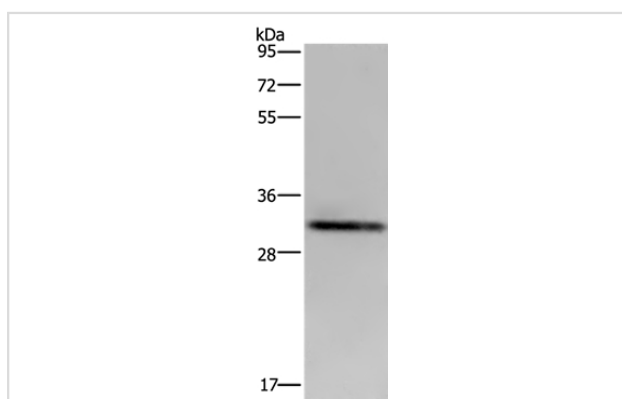
Product Name	ICAM4 Antibody
Host Species	Rabbit
Clonality	Polyclonal
Purification	Antigen affinity purification.
Applications	WB IHC
Species Reactivity	Hu
Specificity	The antibody detects endogenous levels of total ICAM4 protein.
Immunogen Type	Recombinant Protein
Immunogen Description	Fusion protein corresponding to a region derived from internal residues of human intercellular adhesion molecule 4
Target Name	ICAM4
Other Names	LW; CD242
Accession No.	Swiss-Prot#: Q14773NCBI Gene ID: 3386Gene Accssion: BC000046/Q14773
Uniprot	Q14773
GeneID	3386;
SDS-PAGE MW	29kd
Concentration	2.1mg/ml
Formulation	Rabbit IgG in pH7.4 PBS, 0.05% NaN <sub>3</sub> , 40% Glycerol.
Storage	Store at -20°C

## Application Details

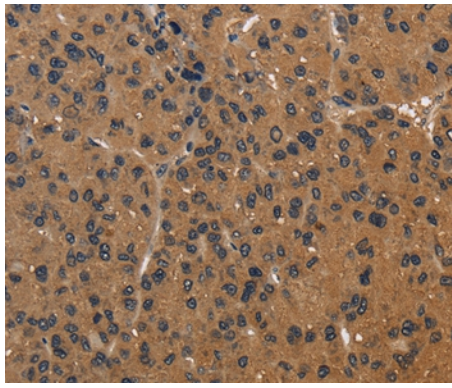
Western blotting: 1:200-1:1000

Immunohistochemistry: 1:50-1:200

## Images



Gel: 10%SDS-PAGE  
Lysate: 40ug OP9 cell  
Primary antibody: 1/500 dilution  
Secondary antibody dilution: 1/8000  
Exposure time: 30 seconds



Immunohistochemical analysis of paraffin-embedded Human liver cancer tissue using #36543 at dilution 1/50.

## Background

This gene encodes the Landsteiner-Wiener (LW) blood group antigen(s) that belongs to the immunoglobulin (Ig) superfamily, and that shares similarity with the intercellular adhesion molecule (ICAM) protein family. This ICAM protein contains 2 Ig-like C2-type domains and binds to the leukocyte adhesion LFA-1 protein.

Note: This product is for in vitro research use only