

MX1 Antibody

Catalog No: #36545

Orders: order@signalwayantibody.comSupport: tech@signalwayantibody.com

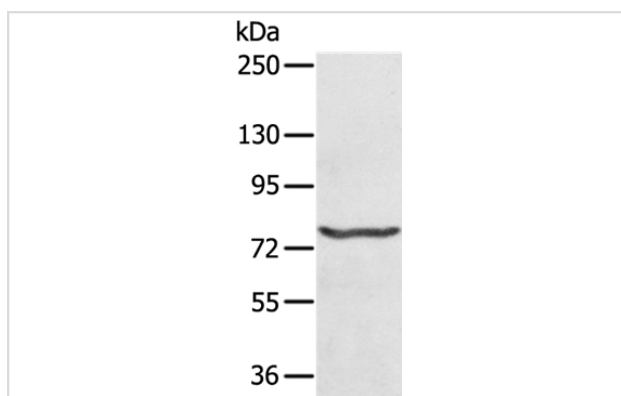
Description

Product Name	MX1 Antibody
Host Species	Rabbit
Clonality	Polyclonal
Purification	Antigen affinity purification.
Applications	WB
Species Reactivity	Hu
Specificity	The antibody detects endogenous levels of total MX1 protein.
Immunogen Type	Recombinant Protein
Immunogen Description	Fusion protein corresponding to a region derived from internal residues of human MX dynamin-like GTPase 1
Target Name	MX1
Other Names	MX; MxA; IFI78; IFI-78K
Accession No.	Swiss-Prot#: P20591NCBI Gene ID: 4599Gene Accssion: BC032602/P20591
Uniprot	P20591
GeneID	4599;
SDS-PAGE MW	76kd
Concentration	1.6mg/ml
Formulation	Rabbit IgG in pH7.4 PBS, 0.05% NaN ₃ , 40% Glycerol.
Storage	Store at -20°C

Application Details

Western blotting: 1:200-1:1000

Images



Gel: 6%SDS-PAGE
 Lysate: 40ug Hela cell
 Primary antibody: 1/200 dilution
 Secondary antibody dilution: 1/8000
 Exposure time: 40 seconds

Background

This gene encodes a guanosine triphosphate (GTP)-metabolizing protein that participates in the cellular antiviral response. The encoded protein is induced by type I and type II interferons and antagonizes the replication process of several different RNA and DNA viruses. There is a related gene

located adjacent to this gene on chromosome 21, and there are multiple pseudogenes located in a cluster on chromosome 4. Alternative splicing results in multiple transcript variants.?

Note: This product is for in vitro research use only