

NOV Antibody

Catalog No: #36547

Orders: order@signalwayantibody.comSupport: tech@signalwayantibody.com

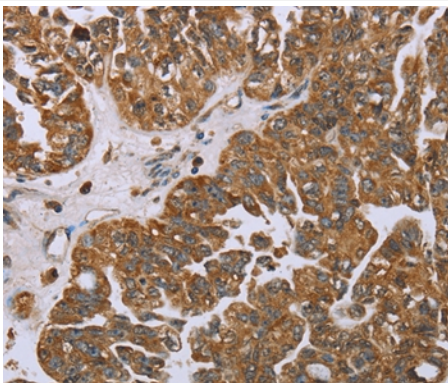
Description

Product Name	NOV Antibody
Host Species	Rabbit
Clonality	Polyclonal
Purification	Antigen affinity purification.
Applications	IHC
Species Reactivity	Hu Ms
Specificity	The antibody detects endogenous levels of total NOV protein.
Immunogen Type	Recombinant Protein
Immunogen Description	Fusion protein corresponding to a region derived from internal residues of human nephroblastoma overexpressed
Target Name	NOV
Other Names	CCN3; NOVh; IBP-9; IGFBP9; IGFBP-9
Accession No.	Swiss-Prot#: P48745NCBI Gene ID: 4856Gene Accssion: BC015028
Uniprot	P48745
GeneID	4856;
Concentration	1.2mg/ml
Formulation	Rabbit IgG in pH7.4 PBS, 0.05% NaN ₃ , 40% Glycerol.
Storage	Store at -20°C

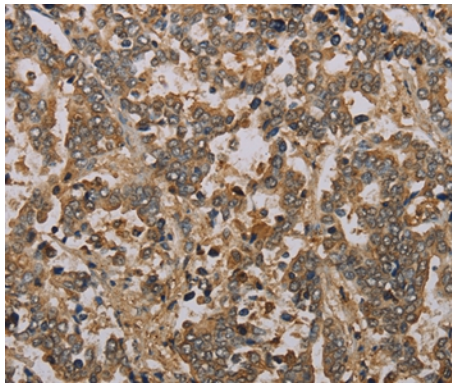
Application Details

Immunohistochemistry: 1:25-1:100

Images



Immunohistochemical analysis of paraffin-embedded Human ovarian cancer tissue using #36547 at dilution 1/25.



Immunohistochemical analysis of paraffin-embedded Human liver cancer tissue using #36547 at dilution 1/25.

Background

The protein encoded by this gene is a small secreted cysteine-rich protein and a member of the CCN family of regulatory proteins. CCN family proteins associate with the extracellular matrix and play an important role in cardiovascular and skeletal development, fibrosis and cancer development.

Note: This product is for in vitro research use only