

IL22RA2 Antibody

Catalog No: #36552

Orders: order@signalwayantibody.com

Support: tech@signalwayantibody.com

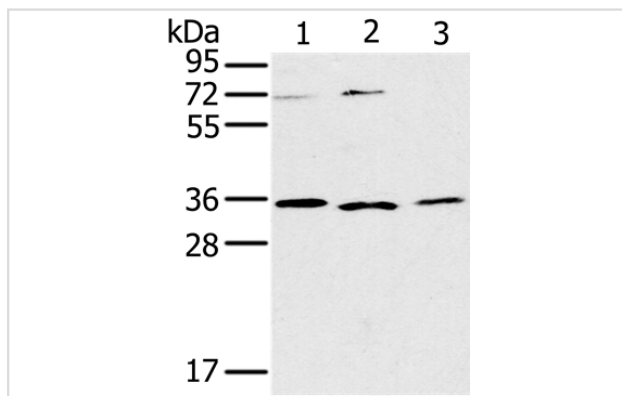
Description

| | |
|-----------------------|---|
| Product Name | IL22RA2 Antibody |
| Host Species | Rabbit |
| Clonality | Polyclonal |
| Purification | Antigen affinity purification. |
| Applications | WB |
| Species Reactivity | Hu |
| Specificity | The antibody detects endogenous levels of total IL22RA2 protein. |
| Immunogen Type | Recombinant Protein |
| Immunogen Description | Fusion protein corresponding to a region derived from internal residues of human interleukin 22 receptor, alpha 2 |
| Target Name | IL22RA2 |
| Other Names | CRF2X; CRF2-10; CRF2-S1; IL-22BP; IL-22RA2; ZCYTOR16; IL-22R-alpha-2 |
| Accession No. | Swiss-Prot#: Q969J5NCBI Gene ID: 116379Gene Accssion: BC125167/Q969J5 |
| Uniprot | Q969J5 |
| GeneID | 116379; |
| SDS-PAGE MW | 31kd |
| Concentration | 0.5mg/ml |
| Formulation | Rabbit IgG in pH7.4 PBS, 0.05% NaN ₃ , 40% Glycerol. |
| Storage | Store at -20°C |

Application Details

Western blotting: 1:200-1:1000

Images



Gel: 10%SDS-PAGE
 Lysates (from left to right): SP20, Raji and 231 cell
 Amount of lysate: 40ug per lane
 Primary antibody: 1/200 dilution
 Secondary antibody dilution: 1/8000
 Exposure time: 10 minutes

Background

This gene encodes a member of the class II cytokine receptor family. The encoded soluble protein specifically binds to and inhibits interleukin 22

activity by blocking the interaction of interleukin 22 with its cell surface receptor. The encoded protein may be important in the regulation of inflammatory response, and has been implicated in the regulation of tumorigenesis in the colon. Alternative splicing results in multiple transcript variants encoding distinct isoforms.?

Note: This product is for in vitro research use only