

IL27RA Antibody

Catalog No: #36553

Orders: order@signalwayantibody.comSupport: tech@signalwayantibody.com

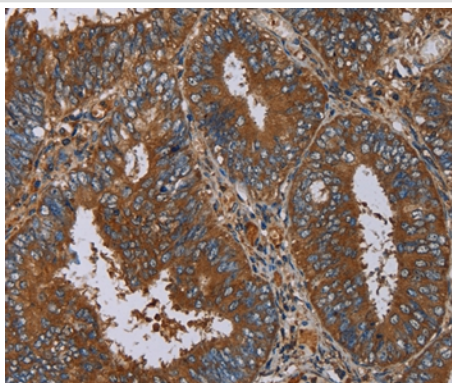
Description

Product Name	IL27RA Antibody
Host Species	Rabbit
Clonality	Polyclonal
Purification	Antigen affinity purification.
Applications	IHC
Species Reactivity	Hu Ms
Specificity	The antibody detects endogenous levels of total IL27RA protein.
Immunogen Type	Recombinant Protein
Immunogen Description	Fusion protein corresponding to a region derived from internal residues of human interleukin 27 receptor, alpha
Target Name	IL27RA
Other Names	CRL1; TCCR; WSX1; IL27R; IL-27RA; zcytor1
Accession No.	Swiss-Prot#: Q6UWB1NCBI Gene ID: 9466Gene Accssion: BC028003/Q6UWB1
Uniprot	Q6UWB1
GeneID	9466;
Concentration	1.5mg/ml
Formulation	Rabbit IgG in pH7.4 PBS, 0.05% NaN ₃ , 40% Glycerol.
Storage	Store at -20°C

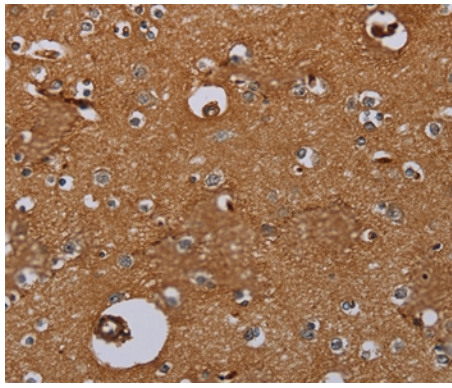
Application Details

Immunohistochemistry: 1:50-1:200

Images



Immunohistochemical analysis of paraffin-embedded Human colon cancer tissue using #36553 at dilution 1/30.



Immunohistochemical analysis of paraffin-embedded Human brain tissue using #36553 at dilution 1/30.

Background

In mice, CD4⁺ helper T-cells differentiate into type 1 (Th1) cells, which are critical for cell-mediated immunity, predominantly under the influence of IL12. Also, IL4 influences their differentiation into type 2 (Th2) cells, which are critical for most antibody responses. Mice deficient in these cytokines, their receptors, or associated transcription factors have impaired, but are not absent of, Th1 or Th2 immune responses. This gene encodes a protein which is similar to the mouse T-cell cytokine receptor Tccr at the amino acid level, and is predicted to be a glycosylated transmembrane protein.

Note: This product is for in vitro research use only