

IPO13 Antibody

Catalog No: #36554

Orders: order@signalwayantibody.comSupport: tech@signalwayantibody.com

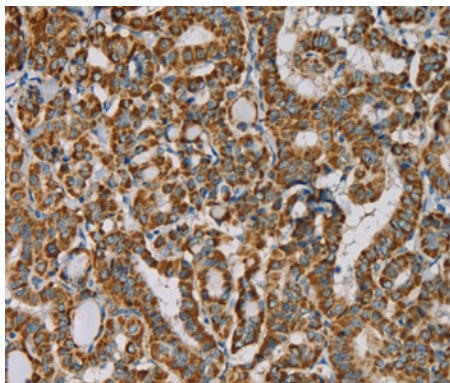
Description

Product Name	IPO13 Antibody
Host Species	Rabbit
Clonality	Polyclonal
Purification	Antigen affinity purification.
Applications	IHC
Species Reactivity	Hu
Specificity	The antibody detects endogenous levels of total IPO13 protein.
Immunogen Type	Recombinant Protein
Immunogen Description	Fusion protein corresponding to residues near the C terminal of human importin 13
Target Name	IPO13
Other Names	LGL2; IMP13; KAP13; RANBP13
Accession No.	Swiss-Prot#: O94829NCBI Gene ID: 9670Gene Accssion: BC008194/O94829
Uniprot	O94829
GeneID	9670;
Concentration	1.4mg/ml
Formulation	Rabbit IgG in pH7.4 PBS, 0.05% NaN ₃ , 40% Glycerol.
Storage	Store at -20°C

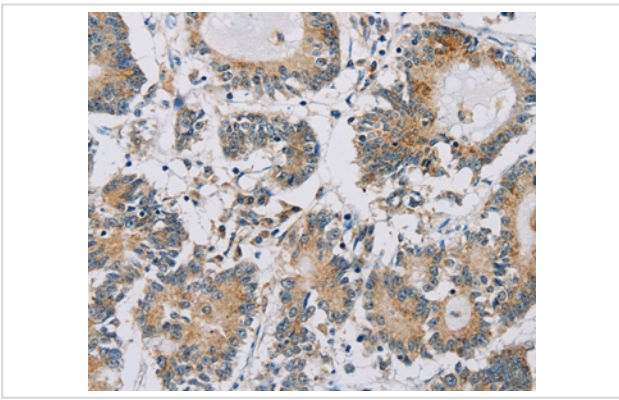
Application Details

Immunohistochemistry: 1:50-1:200

Images



Immunohistochemical analysis of paraffin-embedded Human thyroid cancer tissue using #36554 at dilution 1/25.



Immunohistochemical analysis of paraffin-embedded Human colon cancer tissue using #36554 at dilution 1/25.

Background

This gene encodes a member of the importin-beta family of nuclear transport proteins. The encoded protein mediates the import of specific cargo proteins from the cytoplasm to the nucleus and is dependent on the Ras-related nuclear protein-GTPase system. The encoded protein is also involved in nuclear export of the eukaryotic translation initiation factor 1A.

Note: This product is for in vitro research use only