

Description

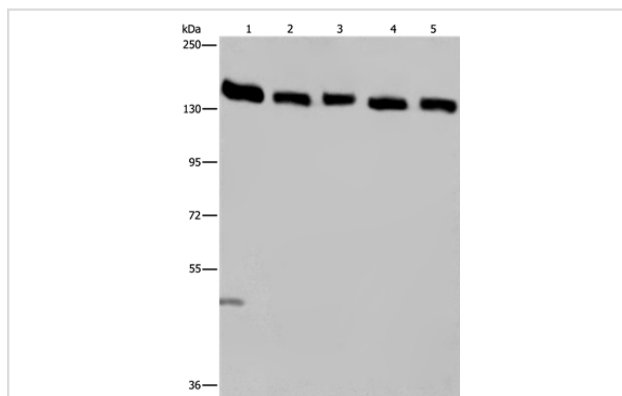
Product Name	IPO4 Antibody
Host Species	Rabbit
Clonality	Polyclonal
Purification	Antigen affinity purification.
Applications	WB IHC
Species Reactivity	Hu
Specificity	The antibody detects endogenous levels of total IPO4 protein.
Immunogen Type	Recombinant Protein
Immunogen Description	Fusion protein corresponding to residues near the C terminal of human importin 4
Target Name	IPO4
Other Names	Imp4
Accession No.	Swiss-Prot#: Q8TEX9NCBI Gene ID: 79711Gene Accssion: BC003690
Uniprot	Q8TEX9
GeneID	79711;
SDS-PAGE MW	119kd
Concentration	2.4mg/ml
Formulation	Rabbit IgG in pH7.4 PBS, 0.05% NaN ₃ , 40% Glycerol.
Storage	Store at -20°C

Application Details

Western blotting: 1:500-1:2000

Immunohistochemistry: 1:50-1:200

Images



Gel: 6%SDS-PAGE

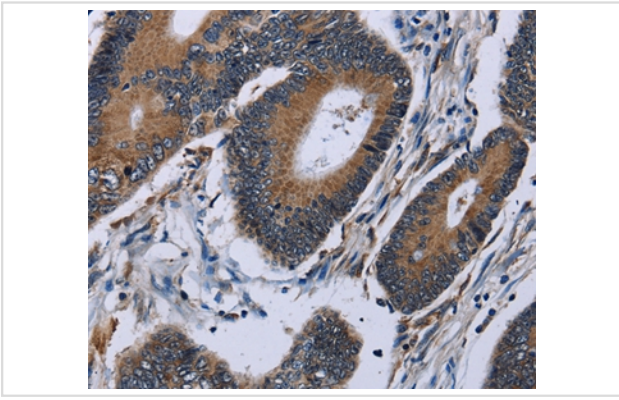
Lysates (from left to right): Hela cell and human testis tissue, A549, Jurkat and K562 cell

Amount of lysate: 40ug per lane

Primary antibody: 1/550 dilution

Secondary antibody dilution: 1/8000

Exposure time: 40 seconds



Immunohistochemical analysis of paraffin-embedded Human colon cancer tissue using #36555 at dilution 1/50.

Background

Importin-4 is a protein that in humans is encoded by the IPO4 gene. Functions in nuclear protein import as nuclear transport receptor. Serves as receptor for nuclear localization signals (NLS) in cargo substrates. Is thought to mediate docking of the importin/substrate complex to the nuclear pore complex (NPC) through binding to nucleoporin and the complex is subsequently translocated through the pore by an energy requiring, Ran-dependent mechanism. At the nucleoplasmic side of the NPC, Ran binds to the importin, the importin/substrate complex dissociates and importin is re-exported from the nucleus to the cytoplasm where GTP hydrolysis releases Ran.

Note: This product is for in vitro research use only